

The challenging management of acute mesenteric ischemia - too frail or too late?

Andreia Pinelo , Luís Loureiro , Daniel Mendes , Henrique Rocha , Henrique Almeida , Miguel Queirós, João Cabral , Rui Machado 

Department of Angiology and Vascular Surgery, Centro Hospitalar Universitário de Santo António

Submitted: May 5, 2024; Reviewed: January 24, 2025; Accepted: March 3, 2025

Presented at: 23rd annual meeting of the Portuguese Society of Angiology and Vascular Surgery

ABSTRACT

INTRODUCTION: acute mesenteric ischemia (AMI) presents a life-threatening emergency, requiring a high degree of suspicion for timely diagnosis. Despite advancements in the management of these patients, in-hospital mortality rates remain high. This study aims to assess the outcomes and prognostic factors in patients with AMI.

METHODS: A retrospective single-center analysis of all patients undergoing emergent surgery for arterial occlusive AMI between January 2020 and February 2024 was conducted. The primary outcome was 30-day survival. Correlations between survival and laboratory biomarkers at admission were investigated.

RESULTS: Thirty patients underwent emergent surgery for occlusive AMI. The overall 30-day survival rate was 33%. Pre-operative arterial HCO₃-to-lactate ratio ≤ 10 and neutrophil-to-lymphocyte ratio > 16 correlated with lower survival, showing 83% and 59% sensitivities, respectively, and 100% specificity for 30-day mortality.

CONCLUSION: Despite advancements in patient management strategies, AMI mortality rates remain high. The neutrophil-to-lymphocyte ratio has been proposed as a diagnostic and prognostic marker in AMI. While the HCO₃-to-lactate ratio has not yet been described, it may serve as a more sensitive and specific predictor of mortality than lactate alone.

Keywords: Acute mesenteric ischemia; mortality; prognostic factors.

INTRODUCTION

Acute mesenteric ischemia (AMI) constitutes a life-threatening emergency, presenting a persistent diagnostic challenge despite advancements in diagnostic techniques. Estimates suggest it may account for approximately 1% of all cases of acute abdomen and may reach 10% in patients over 70 years old.^[1,2] Arterial thromboembolic occlusion emerges as the predominant cause, detected in up to 68% of cases, while venous thrombosis and non-occlusive etiologies represent 28% and 7%, respectively.^[3,4] Nevertheless, the true incidence likely remains underreported due to undiagnosed cases. As early

as 1926, Cokkinis lamented the seemingly insurmountable challenges posed by this condition, stating “the diagnosis is impossible, the prognosis hopeless, and the treatment useless”.^[5] Despite a century of medical progress, AMI remains a source of concern, particularly due to poor outcomes, even after revascularization. Notably, despite advancements in patient management strategies, mortality rates have shown limited improvement over the past decades,^[6] highlighting an enduring gap in our understanding of the pathology and its prognostic indicators. This study aimed to evaluate real-world outcomes among patients admitted for acute mesenteric arterial occlusive ischemia, focusing on cases referred to

Corresponding Author:

Andreia Pinelo | afbpinelo@gmail.com

Department of Angiology and Vascular Surgery, Centro Hospitalar Universitário de Santo António. Largo do Prof. Abel Salazar, 4099-001 Porto.

Angiol Vasc Surg 2025;21(1):12-17

DOI: <https://doi.org/10.48750/acv.605>



vascular surgery where mesenteric revascularization was attempted.

METHODS

A retrospective single-center analysis was conducted, comprising all patients who underwent emergent surgery for occlusive arterial AMI between January 2020 and February 2024. Demographic, clinical, and procedural data were extracted from patient records. The primary outcome assessed was the 30-day survival rate. Secondary analysis included the evaluation of potential laboratory predictors of in-hospital mortality, which were rapidly obtained at admission through arterial blood gas and venous analysis. Previously described parameters, including acid-base imbalances (pH and lactate), renal function (creatinine), and neutrophil-to-lymphocyte ratio (NLR), were included in the analysis.^[7-11]

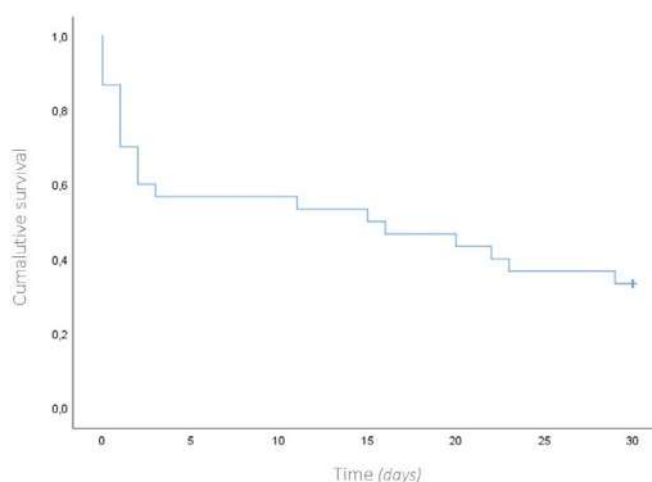
Although urea and the urea-to-creatinine ratio have not been widely studied in this context, they are promising indicators for evaluating critically ill patients and were therefore incorporated.^[12] The inclusion of bicarbonate as a variable, both independently and in combination with lactate variability – HCO₃-to-lactate ratio – was based on our empirical observation that patients with greater clinical severity exhibited not only elevated lactate levels, a well-established marker in the literature, but also significant bicarbonate depletion, a key buffer in acid-base disturbances. Values from the last preoperative samples were used to analyze all parameters. The interval between the onset of acute symptoms and operation was also investigated as a prognostic factor. Statistical analyses were conducted using IBM's SPSS Statistics version 25, with a significance level set at 0.05. Categorical variables were summarized as frequencies and percentages. Normal distribution of continuous variables was assessed using the Shapiro-Wilk test. Continuous variables with normal distribution were presented as means and standard deviations and compared using t-tests; variables with non-normal distribution were expressed as medians and interquartile ranges and compared through the Mann-Whitney test. The 30-day survival rate was calculated using the Kaplan-Meier method. Differences in survival rates among different surgical approaches (open, endovascular, and hybrid) and between embolic and thrombotic etiologies were assessed using the Mantel-Cox log-rank test. Potential predictors of 30-day mortality and their impact on prognosis were analyzed using the Cox proportional hazard model (stepwise backwards multivariable analysis).

Receiver operating characteristic (ROC) curve analysis was performed to assess the discriminative ability of significant variables in predicting outcomes. DeLong's test was employed to compare the Area Under the Curve (AUC) values, with the optimal threshold determined based on the Youden index.

RESULTS

Thirty patients, with a mean age of 80 years, underwent emergent surgery for occlusive arterial AMI. Males were predominantly affected, with a ratio of females to males of 1:1.3. In most patients, the index event was the first presentation of mesenteric ischemia, with only six reporting previous symptoms suggestive of intestinal angina. The median time of acute symptom evolution was 48 hours [12 – 96], and the mean time from diagnosis to surgery was 1.8 hours [0.5h – 6]. An embolic cardiac source was identified in 14 (47%) patients. The majority underwent open surgical thromboemblectomy (n=17), with retrograde open stenting of the superior mesenteric artery (ROMS) in seven of these patients. Segmental enterectomy was performed in five patients during the index operation, with second-look laparostomy at 24 hours performed in 10 patients, three requiring enterectomy at this time-point, [Table 1](#). The overall 30-day survival rate was 33%, [Figure 1](#). When comparing thrombotic and embolic etiologies, there was a non-significant trend to higher 30-day survival rates (44% vs. 21%, p=0.266) in the thrombotic group, [Figure 2](#). Comparing different revascularization strategies (endovascular, hybrid, or open), the endovascular group exhibited a higher 30-day survival rate compared to hybrid and open approaches, though without statistical significance (30-day survival rates of 50%, 25%, and 10%, respectively; p=0.482), [Figure 3](#).

Figure 1. Kaplan-Meier curve for overall survival at 30-days for patients with acute mesenteric ischemia



Analysis of preoperative variables revealed that the HCO₃-to-lactate ratio significantly impacted 30-day survival, with a 15% increase in mortality for each unit decrease in the ratio (Hazard Ratio 0.846, 95% confidence interval 0.760-0.943, p=0.002). Additionally, the NLR showed a significant relation with 30-day survival, with a 4% hazard increase in mortality for each unit increase in NLR (Hazard Ratio =1.044, 95% confidence interval 1.012-1.077, p=0.006). Creatinine, urea, and time of symptom evolution showed no significant relation with the outcome, [Tables 2](#) and [3](#).

Table 1. Demographics, presentation, etiology, and operative details of patients with acute mesenteric ischemia included in this study.

Male sex, n(%)	17 (57)
Age, mean(SD)	79.6 (9.7)
Presentation	
Acute, n(%)	24 (80)
Acute on chronic, n(%)	6 (20)
Time to diagnosis (h), <i>median</i> (IQR)	48 (48)
Time from diagnosis to OR (h), <i>mean</i> (SD)	1.8 (1.6)
Etiology	
Embolic, n(%)	14 (47)
Thrombotic, n(%)	16 (53)
Atherosclerotic, n(%)	15 (94)
Isolated SMA dissection, n(%)	1 (6)
Operative strategy	
Thromboembolectomy, n(%)	10 (33)
Thromboembolectomy + ROMS, n(%)	7 (23)
Thromboaspiration (Penumbra®), n(%)	2 (6)
Pharmacomechanical thrombectomy (Angiojet®) + stent, n(%)	1 (3)
Angioplasty + stent, n(%)	6 (20)
Exploration without revascularization, n(%)	4 (13)
Enterectomy, n(%)	5 (17)
Second-look exploration at 24h, n(%)	10 (33)
Enterectomy at second-look, n(%)	3 (30)

h – hours; OR – operating room; SD – standard deviation; SMA – superior mesenteric artery; ROMS – retrograde open mesenteric stenting

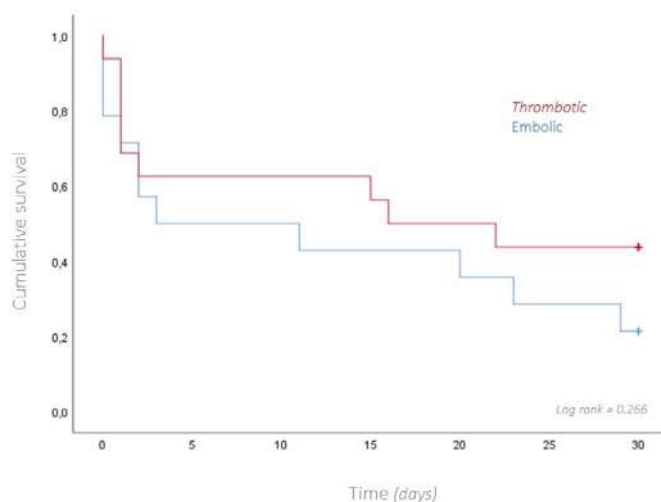
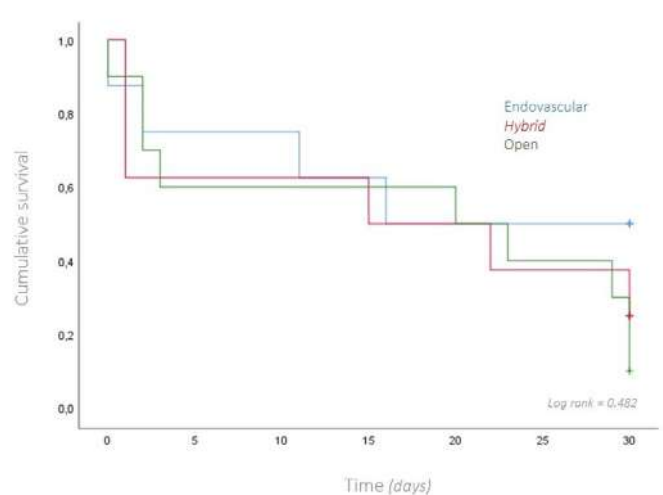
Figure 2. Kaplan-Meier curve for overall survival at 30-days, comparing patients with thrombotic and embolic etiology for acute mesenteric ischemia.**Figure 3.** Kaplan-Meier curve for overall survival at 30-days, comparing patients with different operative strategies (endovascular, hybrid or open) for acute mesenteric ischemia.

Table 2. Predictors of 30-day mortality for patients with acute mesenteric ischemia, included in the study (univariable analysis)

	Dead at 30 days	Alive at 30 days	P
pH, mean \pm SD	7.34 \pm 0.02	7.41 \pm 0.02	0.340
Lactate, mean \pm SD	6.15 \pm 1.23	1.66 \pm 0.33	0.004
HCO ₃ , mean \pm SD	19.57 \pm 1.04	24.12 \pm 1.19	0.350
HCO ₃ :Lactate, mean \pm SD	6.50 \pm 1.18	21.40 \pm 4.98	0.009
Neutrophiles, mean \pm SD	14670 \pm 1342	10251 \pm 1373	0.417
Lymphocytes, mean \pm SD	847 \pm 132	1303 \pm 208	0.551
NLR, mean \pm SD	24.67 \pm 3.62	9.60 \pm 1.76	0.016
Creatinine, mean \pm SD	1.82 \pm 0.2	1.08 \pm 0.14	0.099
Urea, mean \pm SD	79.67 \pm 7.62	66.44 \pm 9.62	0.391
Urea:creatinine, mean \pm SD	47.11 \pm 4.39	57.7 \pm 10.86	0.354
Time to diagnosis, median (IQR)	72 (48)	48 (48)	0.846

IQR – interquartile range; **NLR** – neutrophile-to-lymphocyte ratio; **SD** – standard deviation.

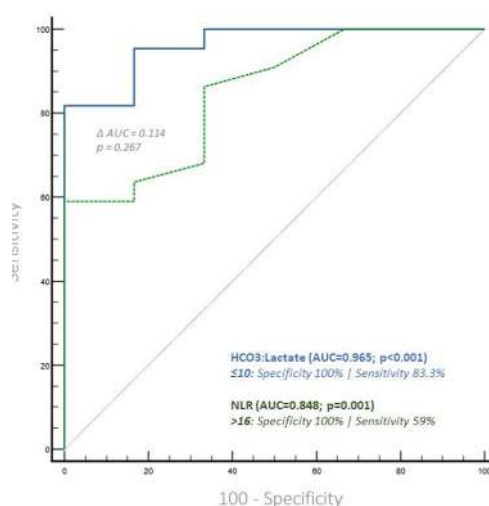
Table 3. Predictors of 30-day mortality for patients with acute mesenteric ischemia, included in the study (multivariable analysis)

	HR	p	CI	HR	p	CI
pH	24.69	0.421	0.010 - 61365.77			
Lactate	0.99	0.895	0.883 - 1.173			
HCO ₃	0.87	0.125	0.721 - 1.041			
HCO ₃ :lactate	0.87	0.028	0.776 - 0.985	0.846	0.002	0.760 - 0.943
Neutrophiles	1.091	0.182	0.960 - 1.240			
Lymphocytes	0.684	0.628	0.147 - 3.185			
NLR	1.02	0.537	0.958 - 1.085	1.044	0.006	1.012 - 1.077
Creatinine	0.906	0.923	0.122 - 6.758			
Urea	1.01	0.689	0.962 - 1.060			
Urea: Creatinine	0.973	0.404	0.911 - 1.038			
Time to diagnosis	1.003	0.777	0.985 - 1.021			

CI – confidence interval; **HR** – hazard ratio; **NLR** – neutrophile-to-lymphocyte ratio

ROC analysis determined a HCO₃-to-lactate ratio ≤ 10 as the optimal cutoff for predicting 30-day mortality, exhibiting a specificity of 100% and a sensitivity of 83% (AUC=0.965; CI 0.826-0.999; $p<0.001$).

For NLR, the optimal cutoff was > 16 , with a specificity of 100% and a sensitivity of 59% (AUC 0.848; CI 0.663-0.955; $p<0.001$). Pairwise comparison of the Areas Under the Curves (AUCs) showed a difference of 0.114, which was not statistically significant ($p=0.2647$), [Figure 4](#).

Figure 4. Receiver operator curve for predictors of death following acute mesenteric ischemia

AUC – area under the curve. **NLR** – neutrophil-to-lymphocyte ratio

DISCUSSION

The overall mortality of acute mesenteric ischemia remains alarmingly high, as evidenced by the 30-day survival rate of 33% observed in patients with occlusive arterial AMI referred for revascularization in this study. These results fall short of those reported in the literature,^[13,14] indicating the persistent challenge posed by this condition and the inadequacy of current diagnostic and management strategies. Despite not achieving statistical significance in the multivariable Cox regression analysis, it is noteworthy that the majority of patients experienced a significant delay in diagnosis and referral to the vascular team following the onset of acute symptoms, with a median time of symptom evolution of 48 hours – a marked deviation from the reported average delay of 8 hours, with a reported increase in mortality rates to 80–100% with delays of more than 24 hours, the authors assume that this lack of significance may be justified by the small sample size and by the globally prolonged time of evolution, which precludes the evaluation of the true benefit of a timely revascularization.^[15,16]

When comparing subgroups, patients with thrombotic etiology and those treated with endovascular approaches had higher survival rates, although without statistical significance, possibly due to the small sample size. We hypothesize that the higher survival trend in the thrombotic group is due to the inclusion of patients with acute-on-chronic presentations. These patients often present with a less severe clinical picture, owing to established collateral circulation, which allows for less invasive endovascular management, which is also associated with lower mortality in this subgroup.^[14] It remains unclear whether patients treated with endovascular techniques have better survival due to the treatment itself or because it is offered to patients with a better baseline prognosis.

It has been shown that a timely revascularization significantly improves survival of these patients. Yet, a proper diagnosis and timely revascularization are still a challenge, prompting questions about optimizing the pathology's recognition and defining the optimal window for intervention.^[13] Various prognostic factors have been proposed with a recent meta-analysis, including 51 studies and 10 394 patients, showing that advanced age, patient's dependency, delay to surgery, chronic kidney disease, diabetes, arrhythmia, cardiac failure, hemodynamic instability, extensive bowel involvement and higher levels of creatinine and lactates correlated with mortality.^[7] Given the limited sample size, this study focused on parameters rapidly obtained during the patient's evaluation. Lactate levels have been widely studied as prognostic markers. Still, their utility in predicting outcomes remains contentious, particularly given their tendency to stay within normal ranges until late stages of the disease, and data showed that the value of serial lactate and pH is limited in predicting the extent of intestinal ischemia.^[8,9] However, it is also crucial to recognize that, despite not being sensitive enough to guide diagnosis, these patients experience significant metabolic imbalances, which may significantly impact the prognosis.

This study failed to show that the lactates or the pH alone related with 30-day survival; however, when analyzing the

combined variation of the lactate and the HCO_3^- a statistically significant result was found, with a HCO_3^- -to-lactate ratio ≤ 10 was showing a 100% specificity and an 83% sensitivity for 30-day mortality and independent of the creatinine levels. The authors theorize that the lactate-to- HCO_3^- ratio may serve as an indicator not only of the severity of ischemia and tissue hypoperfusion but also reflects the impairment of acidemia buffering and correction mechanisms to compensate for metabolic dysfunctions, which may be compromised, particularly in critically ill patients, and may dictate a status of irreversibility.^[17] Consequently, encompassing both factors, this composite index proves highly predictive of mortality. A recently published study, applying a similar rationale, found that the inverted lactate-to-bicarbonate ratio had greater predictive power for 28-day in-hospital mortality in children with dengue septic shock compared to lactate alone (Odds Ratio 8.66, $p < 0.01$ vs. 1.35, $p < 0.001$, respectively), reinforcing the prognostic significance of this index in critically ill patients.^[18]

The neutrophil-to-lymphocyte ratio has been proposed as a prognostic tool in other vascular territories,^[19–22] and in patients with acute mesenteric ischemia.^[11] In this study, we corroborate this hypothesis, with an NLR ≥ 16 showing a 100% specificity for 30-day mortality.

If the time to diagnosis and referral for revascularization, far beyond the ideal 12 hours before peritonitis and septic shock has been established, is still a limiting step for adequate management, the challenge remains after diagnosis is made in determining whether the window for revascularization may have elapsed.^[15] Also, in the era of endovascular treatment, the need for first or second-look laparotomy and the post-operative level of care is not always clear. Both these ratios are rapidly available during the perioperative evaluation and may guide decision-making. Their exceptionally high specificity translates the profound impact of metabolic imbalances and inflammatory response on the prognosis of these patients. It may indicate the irreversibility of the condition and predict the futility or need for additional interventions.

The urea-creatinine ratio is a marker of pre-renal acute kidney injury associated with hypoperfusion states and higher mortality. It has been proposed as a prognostic marker associated with catabolism in critically ill patients.^[12,23] This ratio failed to show an impact on the 30-day survival in this study. However, it may have a potential interest during the follow-up, when evaluating the long-term survival, considering the extended hospitalization periods with muscle wastage and impaired nutritional status associated with extensive bowel resections, contributing to high-catabolic states, which are frequent among the patients surviving the acute stage.

The primary limitations of this study include its retrospective, single-center design and small sample size, which restricted the ability to perform comprehensive subgroup analyses and evaluate other critical care measures beyond revascularization procedures. Furthermore, the absence of a standardized postoperative protocol for serially measuring these markers prevented an assessment of how the implemented interventions influenced patient outcomes. As a pilot study, these findings should be considered preliminary. Future research with a larger, multi-

center cohort and standardized protocols is essential to address these limitations and validate the study's premises.

CONCLUSION

The short-term survival rate reflects the impact of delayed diagnosis and highlight the poor prognosis associated with acute mesenteric ischemia, underscoring the suboptimal outcomes in this patient population. Preliminary data on the lactate-to-HCO₃ and NLR, which demonstrate high specificity for predicting 30-day mortality, suggest their potential as valuable prognostic markers. These findings offer promising insights into risk stratification in this critically ill population and hold potential for translation into clinical practice to guide decision-making.

Acknowledgements: None

Conflicts of interest: None

Funding: None

Data availability: By request to authors

Ethics Approval: Not applicable

Informed Consent: No written informed consent was required due to the study design

Declaration of Generative AI and AI-Assisted Technologies in the Writing

Process: No generative AI or AI-assisted technologies were used in the writing process.

REFERENCES

- Klar E, Rahmanian PB, Bucker A, Hauenstein K, Jauch KW, Luther B. Acute mesenteric ischemia: a vascular emergency. *Dtsch Arztebl Int.* 2012;109:249-56.
- Khan A, Hsee L, Mathur S, Civil I. Damage-control laparotomy in nontrauma patients: review of indications and outcomes. *J Trauma Acute Care Surg* 2013;75:365-8.
- Acosta S, Ogren M, Sternby NH, Bergqvist D, Björck M. Clinical implications for the management of acute thromboembolic occlusion of the superior mesenteric artery: autopsy findings in 213 patients. *Ann Surg* 2005;241:516-22.
- Kärkkäinen JM, Lehtimäki TT, Manninen H, Pajanen H. Acute Mesenteric Ischemia Is a More Common Cause than Expected of Acute Abdomen in the Elderly. *Gastrointest Surg*: 2015;19:1407-14.
- Cokkinis AJ. Mesenteric vascular occlusion. *B J Surg* 2006;14:543
- Adaba F, Askari A, Dastur J, Patel A, Gabe SM, Vaizey CJ, et al. Mortality after acute primary mesenteric infarction: a systematic review and meta-analysis of observational studies. *Colorectal Dis* 2015;17:566-77.
- Sumbal R, Ali Baig MM, Sumbal A. Predictors of Mortality in Acute Mesenteric Ischemia: A Systematic Review and Meta-Analysis. *J Surg Res.* 2022;275:72-86.
- Studer P, Vaucher A, Candinas D, Schnüriger B. The value of serial serum lactate measurements in predicting the extent of ischemic bowel and outcome of patients suffering acute mesenteric ischemia. *J. Gastrointest. Surg.* 2015;19:751-5.
- Björck M, Koelemay M, Acosta S, Bastos Goncalves F, Kölbel T, Kolkman JJ, et al. Editor's Choice - Management of the Diseases of Mesenteric Arteries and Veins: Clinical Practice Guidelines of the European Society of Vascular Surgery (ESVS). *Eur J Vasc Endovasc Surg.* 2017;53:460-510.
- Ozturk S, Unver M, Ozdemir M, Bozbiyik O, Turk Y, Firat O, et al. Prognostic factors in acute mesenteric ischemia and evaluation with multiple logistic regression analysis effecting morbidity and mortality. *Pol Przegl Chir* 2020;93:25-33.
- Wang S, Liu H, Wang Q, Cheng Z, Sun S, Zhang Y, et al. Neutrophil-to-Lymphocyte Ratio and Platelet-to-Lymphocyte Ratio Are Effective Predictors of Prognosis in Patients with Acute Mesenteric Arterial Embolism and Thrombosis. *Ann Vasc Surg.* 2018;49:115-22.
- Gunst J, Kashani KB, Hermans G. The urea-creatinine ratio as a novel biomarker of critical illness-associated catabolism. *Intensive Care Med.* 2019;45:1813-5.
- Kärkkäinen JM, Acosta S. Acute mesenteric ischemia (part I) - Incidence, etiologies, and how to improve early diagnosis. *Best Pract Res Clin Gastroenterol.* 2017;31:15-25.
- Block TA, Acosta S, Björck M. Endovascular and open surgery for acute occlusion of the superior mesenteric artery. *J Vasc Surg.* 2010;52:959-66.
- Kühn F, Schiergens TS, Klar E. Acute Mesenteric Ischemia. *Visc Med.* 2020;36:256-62.
- Luther B, Moussazadeh K, Müller BT, Franke C, Harms JM, Ernst S, et al. The acute mesenteric ischemia - not understood or incurable? *Zbl Chir* 2002;127:674-84.
- Achanti A, Szerlip HM. Acid-Base Disorders in the Critically Ill Patient. *CI J Am Soc Nephrol.* 2023;18:102-12.
- Nguyen Tat T, Vo Hoang-Thien N, Nguyen Tat D, Nguyen PH, Ho LT, Doan DH, et al. Prognostic values of serum lactate-to-bicarbonate ratio and lactate for predicting 28-day in-hospital mortality in children with dengue shock syndrome. *Medicine.* 2024;103:e38000.
- Coelho NH, Coelho A, Augusto R, Semão C, Peixoto J, Fernandes L, et al. Pre-operative Neutrophil to Lymphocyte Ratio is Associated With 30 Day Death or Amputation After Revascularisation for Acute Limb Ischaemia. *Eur J Vasc Endovasc Surg* 2021;62:74-80.
- Bhat TM, Afari ME, Garcia LA. Neutrophil lymphocyte ratio in peripheral vascular disease: a review. *Expert Rev. Cardiovasc. Ther.* 2016;14:871-5.
- Taurino M, Aloisi F, Del Porto F, Nespola M, Dezi T, Pranteda C, et al. Neutrophil-to-Lymphocyte Ratio Could Predict Outcome in Patients Presenting with Acute Limb Ischemia. *J Clin Med.* 2021;10:4343
- Su MI, Liu CW. Neutrophil-to-lymphocyte ratio associated with an increased risk of mortality in patients with critical limb ischemia. *PLoS one.* 2021;16:e0252030.
- Uchino S, Bellomo R, Goldsmith D. The meaning of the blood urea nitrogen/creatinine ratio in acute kidney injury. *Clin Kidney J.* 2012;5:187-91.