

## ARP Case Report nº 21: What is your diagnosis?

### *Caso Clínico ARP nº 21: Qual o seu diagnóstico?*

Inês Conde Vasco<sup>1</sup>, Tiago Bilhim<sup>2</sup>

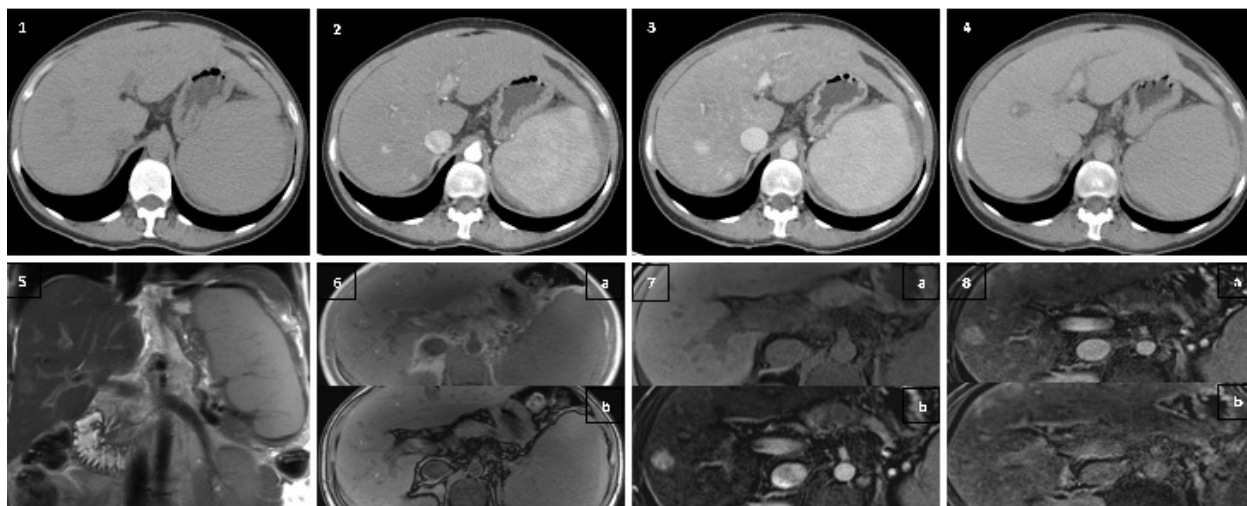
<sup>1</sup>Serviço de Radiologia, Centro Hospitalar Universitário de Lisboa Central, Lisboa, Portugal

<sup>2</sup>Unidade de Radiologia de Intervenção, Hospital Curry Cabral, Centro Hospitalar Universitário de Lisboa Central, NOVA Medical School, Faculdade de Ciências Médicas, Lisboa Portugal

### Case Presentation

A 49-year-old woman with history of bicytopenia (anemia and leukopenia) and monoclonal gammopathy (IgG

lambda) not fully clarified presents with portal hypertension and splenomegaly of unclear cause. Abdominal computed tomography (CT) and magnetic resonance imaging (MRI) were performed for further investigation.



**Figures 1** – Axial non-enhanced CT; 2. Axial contrast-enhanced CT (hepatic arterial phase); 3. Axial contrast-enhanced CT (portal-venous phase); 4. Axial contrast-enhanced CT (delayed phase); 5. Coronal T2-weighted MRI; 6. Axial T1-weighted gradient echo in-phase (a) and out-of-phase (b) MRI; 7. (a) Axial unenhanced T1-weighted MRI; (b) Axial T1-weighted fat-saturated MRI after enhancement with gadoxetic acid (hepatic arterial phase); 8. (a) Axial T1-weighted fat-saturated MRI after enhancement with gadoxetic acid (portal-venous phase); (b) Axial T1-weighted fat-saturated MRI after enhancement with gadoxetic acid (hepatobiliary phase).

Send your answer containing the diagnosis (s) to the email address [actarp.on@gmail.com](mailto:actarp.on@gmail.com).  
The names of the authors of the correct answers will be published in the next issue of the ARP in the case solution.