

Radiological Case Report / Caso Clínico

Transbrachial Basilar Artery Thrombectomy in a Patient with Aortic Dissection

Trombectomia da Artéria Basilar através do Acesso Transbraquial num Paciente com Dissecção da Aorta

F. B. Proença¹, F. Raposo¹, J. B. Madureira¹, C. Campos², P. Teotónio¹, L. Neto¹

¹Neuroradiology Department, CHLN – Hospital de Santa Maria, Lisbon, Portugal
²Neurology Department, CHLN – Hospital de Santa Maria, Lisbon, Portugal

Address

Filipa Maria Borges Costa de Brandão Proença
Serviço de Neuroradiologia
Centro Hospitalar Lisboa Norte
Av. Prof. Egas Moniz
1649-028 Lisboa, Portugal
e-mail:filipa.proencaa@gmail.com

Abstract

Arterial recanalization to restore blood flow in a safe, effective and rapid way is the primary goal in treating hyperacute ischaemic stroke, improving functional outcomes. The clinical benefit of endovascular thrombectomy (EVT) in stroke with large vessel occlusion has been demonstrated and the vascular access route most commonly used for these procedures is the transfemoral approach. When this traditional approach can't be used, alternative routes, such as the transbrachial or radial access, may be crucial. In this paper we describe the case of a posterior circulation stroke in a patient with a type A aortic dissection and aortic aneurysm, treated successfully with emergent EVT via the transbrachial access. Given the increasing use of mechanical thrombectomy in acute stroke management and the need to start the treatment as soon as possible it is imperative to optimize all access methods and focus on future studies evaluating alternative vascular approaches.

Keywords

Stroke; Basilar artery; Aortic dissection; Thrombectomy; Catheterization.

Resumo

A recanalização arterial para restaurar o fluxo sanguíneo de uma forma segura, eficaz e rápida é o objetivo principal no enfarte isquémico agudo, conseguindo melhorar os resultados clínicos. O benefício clínico da trombectomia endovascular (TEV) no AVC com oclusão de um grande vaso tem sido demonstrado e o acesso vascular mais comumente usado para este procedimento é o transfemoral. Quando este acesso não pode ser usado, métodos alternativos, como a via transbraquial ou radial, podem ser cruciais. Neste artigo descrevemos um caso clínico de um AVC da circulação posterior num paciente com dissecção tipo A e aneurisma da aorta, que foi tratado com sucesso com TEV emergente pela via transbraquial. Tendo em conta o uso crescente da TEV no tratamento do AVC agudo e a necessidade de iniciar o tratamento o mais rapidamente possível, é imperativo otimizar todos os métodos de acesso e focar em estudos futuros que avaliem acessos vasculares alternativos.

Palavras-chave

AVC; Artéria basilar; Dissecção da aorta; Trombectomia; Cateterização.

Introduction

Stroke remains an important source of morbidity and mortality around the world. The majority of strokes are ischaemic in nature and usually due to an intracranial artery occlusion. Until recently, the administration of intravenous thrombolytic therapy was the only standard treatment for acute ischaemic stroke. Today the mainstay of treatment is reperfusion therapy along with intravenous administration of pharmacologic thrombolytic agents. Aiming to get better recanalization rates and because thrombolytic agents are mainly useful in a period of 3 to 4.5 hours, endovascular thrombectomy (EVT) was launched. EVT comprises a wide array of endovascular tools to remove thrombus from the neurovasculature and rapidly restore the blood flow in the ischaemic area.^{1,2}

Primarily, in the setting of an ischaemic stroke, medical centres should try to obtain a noncontrast head CT scan to rule out haemorrhage and to show the presence of a large vessel occlusion. Some of these patients, fulfilling certain additional clinical and imaging criteria, might be candidates for EVT.

EVT was proven to be an effective treatment for proximal occlusions of the major intracranial arteries in stroke patients,^{3,4} improving outcomes, and recently proved to be effective even after 6 hours.⁵

Vertebrobasilar strokes are known to be a life-threatening disease and fatal outcome rates of up to 90% have been reported.⁶ The main treatment of vertebrobasilar strokes has been thrombolytic therapy; however, due to the poor outcomes, EVT is frequently considered, especially in basilar artery occlusions.⁶

When performing EVT the traditional approach is the transfemoral access, but several risk factors can preclude this approach⁷ such as vascular anatomy, peripheral vascular disease or aortic dissection. In these situations, alternatives like the transradial, transbrachial or direct carotid puncture techniques are crucial to gain vascular and thrombus access, although they are poorly documented.^{8,9}

We report a case of acute basilar occlusion where a transbrachial approach to revascularization was the preferred approach due to an aortic dissection that precluded the classical transfemoral route.

Clinical Case

A 47-year-old Caucasian male patient, with a clinical history of type A aortic dissection – with previous endovascular stent graft intervention in the ascending and hemiarch aortic segment, ascending aortic aneurysm, previous ischaemic stroke, active smoking and high blood pressure, recurred to the emergency department with left hemiplegia, inability to talk, anarthria, dysphagia, nistagmus and right ataxia, with a National Institute of Health Stroke Scale (NIHSS) of 24. The hemiplegia evolved later and rapidly to tetraparesis.

The initial non contrast CT scan (Fig.1) was negative for acute bleedings or acute ischemic signs - posterior circulation Alberta Stroke Program Early CT Score (PC-ASPECTS) was 10. There was a subtle spontaneous hyperdensity in the basilar artery, possibly corresponding to an acute thrombus. The CT angiography (Fig.1) confirmed a mid-basilar thrombus and additionally an arterial dissection extending between the aortic arch and the left common carotid artery. The supra-aortic vessels were supplied by the true and false lumina. The right vertebral artery was hypoplastic,

ending in an ipsilateral posterior inferior cerebellar artery. Thrombolysis with rtPA was then performed (165 minutes after the beginning of symptoms) and the cardiothoracic surgeon was contacted, who immediately contraindicated the EVT transfemoral approach, due to the risk of extending the dissection into the abdominal aorta and the false lumen.

Emergent EVT was performed 5 hours after stroke onset, under general anaesthesia, using a 6F sheath left transbrachial approach. Left vertebral artery catheterization through the subclavian artery took place and the thrombus was removed after 1 retrieving attempt using the stent Trevo® 6x25mm. Total revascularization of the occluded arterial territory was achieved in 15 minutes after puncture - thrombolysis in cerebral infarction (TICI) 3 score (Fig.2). There were no peri-procedure clinical or technical complications.

There were no acute ischemic or bleeding signs in the 24h control CT scan and in the MRI there was only a small recent ischaemic area in the right anterior paramedian pons (Fig.3).

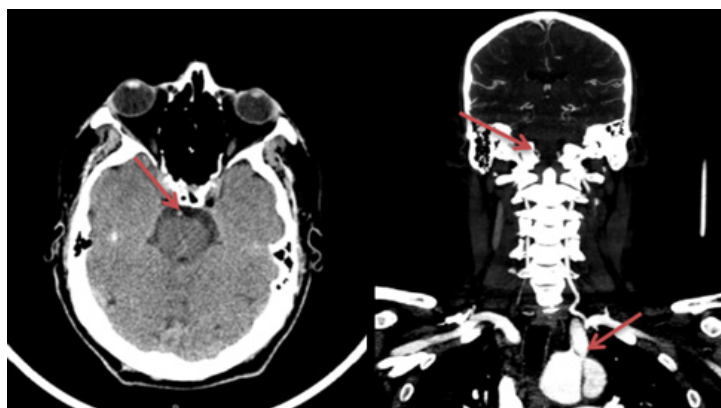


Figure 1 – In the initial head CT scan (left) there were no major ischemic or hemorrhagic signs, the PC-ASPECTS score was 10. Hyperdense basilar artery was noted (arrow). In the CT angiography (right) a right vertebral artery ending in the ipsilateral posterior inferior cerebellar artery (upper arrow) and an arterial dissection extending between the aortic arch and the left common carotid artery are seen (lower arrow).

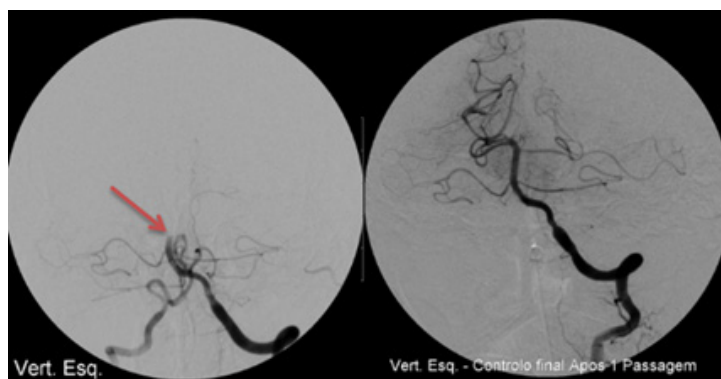


Figure 2 – Digital subtraction angiography in AP view, before (arrow: basilar occlusion) (left) and after endovascular thrombectomy (right). Total revascularization of the occluded arterial territory was achieved - thrombolysis in cerebral infarction (TICI) 3 score.

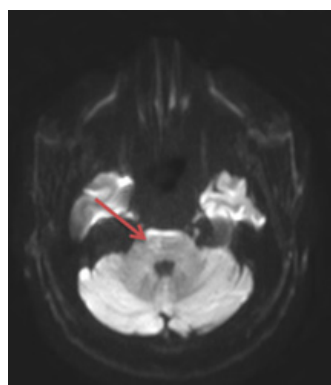


Figure 3 – In the reevaluation MRI there was a small recent ischemic area in the right anterior paramedian pons (Axial Diffusion Weighted Imaging B1000; arrow). The neurological deficits were reversed – NIHSS = 0.

The patient was transferred to the neurovascular unit ward with a normal and spontaneous ventilation, oriented, conscious and punctuating 1 in the NIHSS (slight dysarthria). Next day he was asymptomatic and without focal neurologic signs.

In the stroke unit the medical team underwent the clinical investigation: the blood tests had no major alterations, the vascular Doppler showed mild atherosclerosis in the right carotid artery and the dissection in the left carotid artery. Holter monitoring revealed bigeminy periods and T wave inversion and depression in V5.

The thorax/abdominal/pelvic CT angiography confirmed the intimal flap in the aortic arch and initial descendent

segment, which was partially thrombosed, with communication between the true and the false lumen. The dissection progressed into the common left carotid artery and there were also small dissection segments in the initial brachiocephalic trunk and left subclavian artery. A marked aortic dilatation was seen in the ascending segment with a maximum diameter of 6.5 cm. There wasn't any intracardiac thrombus. There were ischemic changes in the left kidney, pointing to an embolic origin.

The transesophageal echocardiography showed an atrial septal defect, ostium secundum, with right atrial enlargement, that possibly also supported an embolic origin.

The patient was discharged 15 days after stroke onset (NIHSS 0) and started anticoagulation therapy with warfarin (INR target: 2-3). In the following medical appointments (at 10 and 19 months) the patient remained asymptomatic, without neurologic sequelae or new strokes.

Discussion and Conclusion

EVT for large ischaemic stroke has been one of the most powerful treatments in any field of medicine, if the patient fits the most recent guidelines.¹⁰

In this modern era of endovascular treatment for large vessel occlusion in patients with an acute ischaemic stroke, a clear priority is to minimize time to revascularisation, because "time is brain".

When performing EVT the transfemoral access has been the standard route and remains the most frequent approach, given its familiarity, easy accessibility,¹¹ allowing unlimited repetition of puncturing, the use of larger sheaths and less radiation and contrast time.¹² However, in some cases, when patients harbour challenging vascular anatomy, it can be technically difficult and time consuming, and this delay in catheter access and revascularization may be associated with worse prognosis.⁹ Other disadvantages are higher risk of bleeding and hematoma formation, especially in patients using anticoagulation (groin hematoma formation rate with transfemoral access reported to be as high as 10%),¹² pseudoaneurysm, fistulae formation, vessel occlusion¹³ and the need to stop/readjust antiplatelet or anticoagulation treatment after angiography in patients at risk for atherosclerotic or cardioembolic disease.

Alternative routes such as the transradial, transbrachial or carotid artery direct puncture, should then be considered in order to gain vascular access and optimize delivery of thrombectomy devices.

There is evidence in the interventional cardiology field demonstrating safety and advantages of the transradial approach.¹⁴ This route has fewer major access site complications and similar procedural and clinical outcomes, compared to the other two modalities.¹⁵ The advantages of this method are easier compression/hemostasis and thus quick Hospital discharge, reduced costs, fewer bleeding and vascular complications (e.g. pseudoaneurysm formation) and reduced injury risks because no major nerves or veins are located near the radial artery. Despite its large number of benefits it is not always feasible, it requires a longer learning curve for the operator, increased X-ray exposure time, increased pain during the procedure, possibility of radial artery spasm or occlusion, branch vessels can be difficult to catheterize, continued access in the same arm is limited, devices having dimensions and specifications for radial access are lacking,¹⁴ sheath kinking can occur¹⁶

and, in patients with anomalous palmar arch, there may be insufficient blood supply at hand in cases of thrombotic, spastic or traumatic occlusion of the radial artery.¹²

It has been demonstrated that the brachial approach¹⁷ may have more complications compared to the transradial or femoral approaches, with reported overall access site complication rate for noncoronary procedures of 11%.^{12,15} Some of the disadvantages are increased risk because major nerves/veins are located near the brachial artery, repetition of puncturing is limited and it is more difficult to compress, consequently leading to vascular/bleeding consequences and longer Hospital stay.

In this particular case the brachial route was chosen instead of the radial one because the brachial artery caliber looked more favorable (anticipating the need to introduce a larger-bore catheter¹² (8F) to aspirate, if stent retriever failed), due to the interventionist personal experience and preference and also because Allen's test was inconclusive. Additionally, because the distance from the brachial artery to the subclavian artery is smaller and straighter, this technique can offer a more stable support for the guiding catheter.¹²

Concerning direct carotid artery access, in this setting of stroke management, the main advantage is the ability to bypass the anatomically unfavourable areas, shortening the time to reperfusion. In our clinical case, being a basilar artery territory, the carotid route was not considered.

Although not well documented in the neuroendovascular field, neuroradiologists have been slowly adopting these brachial and radial approaches, learning mainly from Cardiology. These routes have been reported as safe and feasible, reducing retroperitoneal haemorrhage since intravenous thrombolysis is often administered concurrently and allowing patient recovery sooner.^{9,16,18,19}

Also, there are recent reports¹⁴ showing no difference in single-pass recanalization rate, number of passages, mean access to reperfusion time, successful revascularization rates and functional outcomes between transradial and transfemoral approaches, particularly in patients whose aortic arch anatomy would present a challenge. Joshi KC et al.¹⁴ have showed that the transradial access has a high rate of procedural success (95.23%) with low complication rates (2.90%) when used for various neuroendovascular interventional procedures. Lee et al.¹² also showed that the transradial or brachial access modalities are good alternative access routes for various neurointerventional procedures. Actually they accomplished almost all kinds of interventional procedures with a high success rate except for cases of carotid stent insertion.

In this case, the patient presented an important contraindication – type A aortic dissection – and also a right vertebral artery ending in the ipsilateral posterior inferior cerebellar artery. There was no other option but to use the transbrachial or radial approach on the left side. Time was crucial to give the patient the proper treatment. Having a previous supra-aortic vessels CT angiography, EVT was rapidly planned and successfully executed and the patient, who was tetraparetic, started walking the very same day after arterial revascularization was obtained. At the end of the procedure, he punctuated 1 in NIHSS (slight dysarthria) and, at discharge, he had a NIHSS of 0, without neurological deficits.

In a time when alternative techniques are undergoing growing adhesion and familiarity in the neuroendovascular field, we recognize that future studies should focus on early and effective triage of patients most likely to require

alternative EVT approaches to reduce their morbi-mortality rates, particularly when posterior circulation strokes occur. Interventional neuroradiologists should become familiar with alternative access routes like radial and brachial artery access in order to provide comprehensive endovascular care to their patients.

Received / Recebido 03/07/2020

Acceptance / Aceite 21/11/2020

Ethical disclosures / Divulgações Éticas

Conflicts of interest: The authors have no conflicts of interest to declare.

Conflitos de interesse: Os autores declaram não possuir conflitos de interesse.

Financing Support: This work has not received any contribution, grant or scholarship.

Suporte financeiro: O presente trabalho não foi suportado por nenhum subsídio ou bolsa.

Confidentiality of data: The authors declare that they have followed the protocols of their work center on the publication of data from patients.

Confidencialidade dos dados: Os autores declaram ter seguido os protocolos do seu centro de trabalho acerca da publicação dos dados de doentes.

Protection of human and animal subjects: The authors declare that the procedures followed were in accordance with the regulations of the relevant clinical research ethics committee and with those of the Code of Ethics of the World Medical Association (Declaration of Helsinki).

Proteção de pessoas e animais: Os autores declaram que os procedimentos seguidos estavam de acordo com os regulamentos estabelecidos pelos responsáveis da Comissão de Investigação Clínica e Ética e de acordo com a Declaração de Helsínquia da Associação Médica Mundial.

References

1. Singh P, Kaur R, Kaur A. Endovascular treatment of acute ischemic stroke. *J Neurosci Rural Pract.* 2013;4:298-303.
2. Raychev R, Saver J. Mechanical thrombectomy devices for treatment of stroke. *Neurol Clin Pract.* 2012;2:231-5.
3. Evans M, White P, Cowley P, Werring DJ. Revolution in acute ischaemic stroke care: a practical guide to mechanical thrombectomy. *Pract Neurol.* 2017;0:1-14.
4. Gandhi CD, Al Mufti F, Singh IP, Abruzzo T, Albani B, Ansari S, et al. Neuroendovascular management of emergent large vessel occlusion: update on the technical aspects and standards of practice by the Standards and Guidelines Committee of the Society of NeuroInterventional Surgery. *J NeuroIntervent Surg.* 2018;0:1-6.
5. Nogueira RG, Jadhav AP, Haussen DC, Bonafe A, Budzik R, Bhuva P, et al. Thrombectomy 6 to 24 hours after stroke with a mismatch between deficit and infarct. *N Engl J Med.* 2018;378:1.
6. Janssen H, Bruckmann H, Killer M, Heck S, Buchholz G, Lutz J. Acute basilar thrombosis: Recanalization following intravenous thrombolysis is dependent on thrombus length. *PLoS ONE.* 2018;13:e0193051.

Acknowledgements

The Neuroradiology and Neurology departments of Santa Maria Hospital - Centro Hospitalar Universitário Lisboa Norte

7. Yamaguchi S, Horie N, Morofuji Y, Satoh K, Suyama K. Rapid recanalization using trevoprovue through a 4.2 Fr catheter without a guiding catheter via transbrachial approach: A case report. *NMC Case Rep J.* 2017;4:97-9.
8. Matias-Guiu JA, Serna-Candel C, Gil A, Lopez-Ibor L. Humeral arterial access: an alternative route to the femoral artery in the endovascular treatment of acute stroke. *Neurologia.* 2012;27:448.
9. Okawa M, Tateshima S, Liebeskind D, Ali L, Thompson M, Saver J, et al. Successful recanalization for acute ischemic stroke via the transbrachial approach. *J NeuroIntervent Surg.* 2014;0:1-4.
10. Campbell B, Donnan G, Mitchell P, Davis S. Endovascular thrombectomy for stroke: current best practice and future goals. *Stroke Vasc Neurol.* 2016;1:e000004.
11. Yoon W, Kwon WK, Choudhri O, Ahn J, Huh H, Ji C, et al. Complications following transradial cerebral angiography: An ultrasound follow-up study. *J Korean Neurosurg Soc.* 2018;61:51-9.
12. Lee D, Lee D, Shim J, Suh D. Feasibility of the transradial or the transbrachial approach in various neurointerventional procedures. *Neurointervention.* 2015;10:74-81.
13. Anjum I, Khan M, Aadil M, Faraz A, Farooqui M, Hashmi A. Transradial vs. transfemoral approach in cardiac catheterization: a literature review. *Cureus.* 2017;9:e1309.
14. Joshi KC, Beer-Furlan A, Crowley R, Chen M, Munich S. Transradial approach for neurointerventions: a systematic review of the literature. *J NeuroIntervent Surg.* 2020;0:1-8.
15. Van Dijk L, Van Noord D, Van Mierlo M, Bijdevaate D, Bruno M, Moelker A. Single-center retrospective comparative analysis of transradial, transbrachial, and transfemoral approach for mesenteric arterial procedures. *J Vasc Interv Radiol.* 2019;1-9.
16. Mokin M, Snyder KV, Levy EI, Hopkins L, Siddiqui A. Direct carotid artery puncture access for endovascular treatment of acute ischemic stroke: technical aspects, advantages, and limitations. *J NeuroIntervent Surg.* 2015;7:108-13.
17. Lam, U, Lao Edmundo, Lam K, Evora M, Wu NQ. Trans-brachial artery access for coronary artery procedures is feasible and safe: data from a single-center in Macau. *Chin Med J* 2019;132:1478-81
18. Sur S, Snelling B, Khandelwal P, Caplan J, Peterson E, Starke R, et al. Transradial approach for mechanical thrombectomy in anterior circulation large-vessel occlusion. *Neurosurg Focus.* 2017;42:E13.
19. Mizokami T, Uwatoko T, Furukawa T, Higashi E, Sakaki Y, Suetsugu N, et al. Transradial approach for mechanical thrombectomy of posterior circulation stroke. *J Endovasc Ther.* 2018;12:314-9.