

## Radiological Case Report / Caso Clínico

**POEMS Syndrome: The Important Role of Imaging in the Diagnosis***Síndrome de POEMS: O Papel Importante da Imagiologia no Diagnóstico*Francisco Grilo<sup>1</sup>, Daniela Barros<sup>1</sup>, Ana Catarina Costa<sup>1</sup>, Filipa Vilaverde<sup>1</sup>, Vasco Mendes<sup>1</sup><sup>1</sup>Department of Radiology, Hospital de Braga, Braga, Portugal**Address**

Francisco Grilo  
Serviço de Radiologia  
Hospital de Braga  
Sete Fontes São Victor  
4710-243 Braga, Portugal  
e-mail: franciscomigueldacostagrilo@gmail.com

Received: 09/10/2021

Accepted: 01/09/2022

Published: 30/04/2023

© Author(s) (or their employer(s)) and ARP  
2023. Re-use permitted under CC BY-NC. No  
commercial re-use.

**Abstract**

POEMS syndrome is a rare paraneoplastic syndrome associated with an underlying plasma cell disorder. Despite it being predominantly a clinical and laboratorial diagnosis, imaging can play a key role by identifying many of the diagnostic criteria.

This case emphasizes the contribution of imaging to the diagnosis of this entity. A 67-year-old woman presents with a supraclavicular lymph node, asthenia and paresthesia and numbness of the lower extremities. Computed tomography (CT) revealed diffuse lymphadenopathy with characteristics suggestive of multicentric Castleman Disease, associated with sclerotic bone lesions, intraperitoneal fluid and hepatosplenomegaly. These findings combined with the presence of monoclonal plasma cell disorder and mild polyneuropathy allowed the correct diagnosis of POEMS syndrome to be established.

**Keywords**

POEMS syndrome; Castleman disease;  
Lymphadenopathy; Plasma cells.

**Resumo**

A Síndrome de POEMS corresponde a uma síndrome paraneoplásica rara associada a distúrbio proliferativo monoclonal plasmocítico. Apesar do diagnóstico ser predominantemente clínico-laboratorial, os estudos imagiológicos podem desempenhar um papel fundamental ao identificar alguns dos critérios de diagnóstico maior e menor.

Este caso ilustra a contribuição dos estudos imagiológicos no diagnóstico desta síndrome. Uma mulher de 67 anos recorre ao médico assistente por tumefação supraclavicular esquerda, sintomas constitucionais, parestesias e défice de sensibilidade nas extremidades inferiores. Tomografia computadorizada (CT) revelou linfadenopatia generalizada com características imagiológicas sugestivas de Doença de Castleman multicêntrica, associada a lesões ósseas escleróticas difusas, hepatoesplenomegalia e líquido livre intra-abdominal.

Estas características, conjugadas com a presença de distúrbio monoclonal plasmocítico e polineuropatia, permitiu um correto diagnóstico de Síndrome de POEMS.

**Palavras-chave**

POEMS syndrome; Castleman disease;  
Lymphadenopathy; Plasma cells.

**Introduction**

POEMS syndrome, also known as osteosclerotic myeloma, is a rare paraneoplastic syndrome associated with an underlying plasma cell disorder.<sup>1</sup> First coined by Bardwick,<sup>2</sup> in 1980, the acronym stands for some of its main characteristics: polyradiculoneuropathy, organomegaly, endocrinopathy, monoclonal plasma cell disorder and skin changes. The diagnosis is often delayed and is a combination of clinical, laboratory and imaging findings.<sup>1</sup>

This case report illustrates the contribution of imaging studies to the diagnosis of this syndrome.

**Case Report**

A 69-year-old woman presented to a general practitioner's consultation with a left supraclavicular lymph node, weight loss and anorexia over the course of 9 months. She also reported paresthesia and numbness of the lower extremities. On physical examination, skin hyperpigmentation was noted. She was referred to consultation with General Surgery and a computed tomography (CT) as well as 18-fluorodeoxyglucose Positron Emission Tomography (FDG-PET/CT) of neck, thorax, abdomen and pelvis were ordered. They

showed diffuse lymphadenopathy (mostly cervical and retroperitoneal) with homogeneous intense enhancement after contrast administration as well as 18-fluorodeoxyglucose (18F-FDG) uptake on FDG-PET/CT, aspects that were characteristic of multicentric Castleman Disease (fig 1 and 2). Associated findings included hepatosplenomegaly and free intraperitoneal fluid (fig 1).

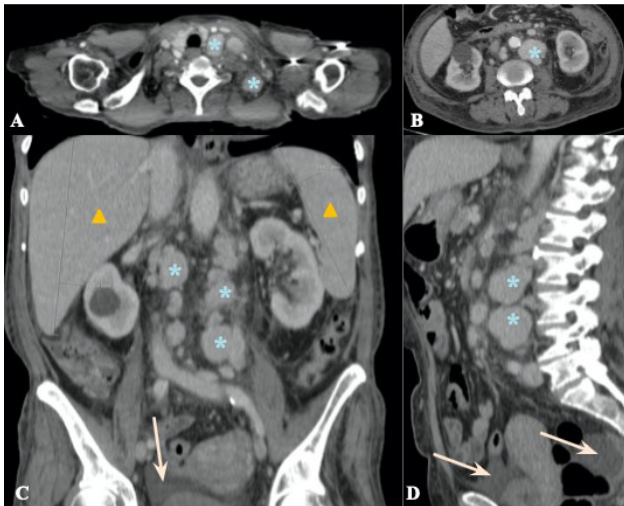
Additionally, there were multiple sclerotic bone lesions spread throughout the vertebrae and the innominate bone (fig 3).

A decision was made to perform an excisional biopsy of the supraclavicular node. The histology was compatible with Castleman Disease.

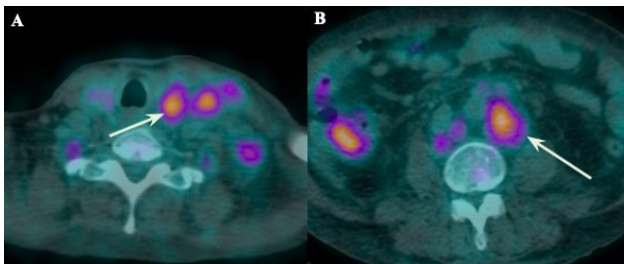
After this result, the patient was then admitted to the hospital for further investigation and work-up on this presumed diagnosis of Multicentric Castleman Disease.

Extensive laboratory studies were prescribed, and the main findings were the presence of a monoclonal cell disorder - M protein spike (IgG kappa type) and elevated levels of Vascular endothelial growth factor (VEGF).

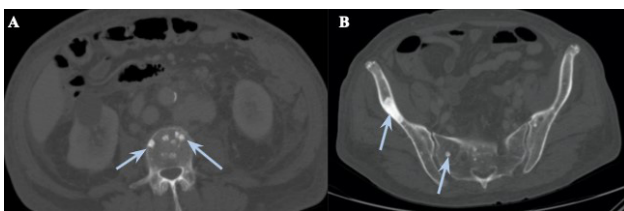
To further characterize the patient's paresthesia and numbness, an electromyography of the lower extremities was done and indicated the presence of myopathy with mild neuropathy.



**Figure 1** – Contrast-enhanced CT scan, soft tissue window (axial plane – A, B, coronal reformatted plane - C, sagittal reformatted plane - D) reveals diffuse lymphadenopathy, predominantly supraclavicular (blue asterisks in A) and retroperitoneal (blue asterisks in B-D) that show enhancement after intravenous contrast administration, findings that were suggestive of multicentric Castleman Disease. There was also hepatosplenomegaly (yellow triangles in C) and mild intraperitoneal fluid (orange arrow in C and D).



**Figure 2** – 18-fluorodeoxyglucose Positron Emission Tomography (FDG-PET/CT) at the level of supraclavicular region (A) and retroperitoneum, just below the renal hilum, (B) reveals 18-fluorodeoxyglucose (18F-FDG) uptake by the enlarged lymph nodes, with a SUVmax of 4.45 for the supraclavicular nodes and of 5.44 for the retroperitoneal nodes.



**Figure 3** – Abdominal-pelvic CT, bone window, at two different levels (A - lumbar vertebrae, at the level of the renal hilum; B - innominate bone) showing diffuse sclerotic punched-out lesions (blue arrows), with the more prominent one in the right ilium.

After combining all of these features, a final diagnosis of POEMS Syndrome was established and the patient was referred to Oncology consultation for further treatment. Following the diagnosis, the patient was first submitted to 6 cycles of chemotherapy with the CyBORDEX regimen (cyclophosphamide + bortezomib + dexamethasone), in a total period of 6 months, with good tolerability, having achieved complete response, as proven by the absence of a M protein spike in the subsequent laboratory studies. She was then transferred to another hospital for a hematologic consultation to be evaluated for possible autologous stem cell transplantation (ASCT), which she underwent 4 months after completing the chemotherapy, roughly 1 year after the diagnosis, with good tolerability and response. Presently, about 5 months post-ASCT, follow-up examinations and

consultations have shown no signs of recurrence and absence of relevant clinical symptoms.

## Discussion

The major criteria for the diagnosis of POEMS syndrome are the presence of polyradiculoneuropathy, monoclonal plasma cell disorder, Castleman disease, sclerotic bone lesions and elevated VEGF. Only the first two ones are mandatory and only one of the other three is required for the diagnosis.<sup>1</sup> In this case, all five criteria were present.

Additionally, there are six minor diagnostic criteria: organomegaly (splenomegaly and hepatomegaly), extravascular volume overload (mild ascites, pleural effusion), skin changes (hyperpigmentation), endocrinopathy, papilledema and thrombocytosis/polycythemia.<sup>1</sup> In this case, the first three were also present.

Despite it being a mostly clinical diagnosis, imaging plays a key role in identifying some of the major and minor criteria, namely the presence of Castleman disease/lymphadenopathy, sclerotic bone lesions, organomegaly and extravascular volume overload.<sup>2</sup>

Sclerotic bone lesions are a hallmark of POEMS syndrome and are better depicted and evaluated on CT, as it is more sensitive and displays more sharp outlines of the lesions, when compared to conventional x-ray.<sup>3</sup> Most of these lesions appear as densely sclerotic, sometimes in a plaque-like configuration, but there have been reports of other less frequent appearances, such as lytic with a sclerotic rim or even with a mixed soap-bubble appearance.<sup>3,4</sup>

FDG-PET/CT has also been proposed as a way to depict these lesions, although the FDG-uptake is variable and it occurs more frequently in lytic lesions.<sup>1</sup>

Additionally, while evaluating the presence of bone lesions, CT is also useful to identify the other diagnostic criteria, such as extravascular overload (ascites, pleural effusion), Castleman disease and organomegaly.

Castleman disease, in particular, when associated with POEMS Syndrome, typically presents as multicentric disease associated with HHV-8 virus, in which contrast-enhanced CT will show diffuse lymphadenopathy, usually with homogenous enhancement after contrast administration. In multicentric disease associated with HHV-8, it has been reported that the degree of enhancement is less pronounced when compared to unicentric cases of Castleman disease.<sup>5</sup>

While the potential for FDG-PET/CT in the diagnosis, treatment assessment, and follow-up of CD has not been fully demonstrated, some reports say it can help characterize its extent (unicentric vs multicentric) and help in the evaluation of response treatment. However, other causes of lymphadenopathy can also show 18F-FDG uptake, such as lymphoma or sarcoidosis, which can confound the findings.<sup>6</sup> Initially, the diagnosis was presumed to be Multicentric Castleman Disease as represented by the diffuse enhancing lymphadenopathy. However, the presence of diffuse bone sclerotic lesions, organomegaly and mild ascites on imaging studies, combined with the other clinical and laboratory findings, allowed the correct diagnosis of POEMS syndrome to be established.

Once the diagnosis is confirmed, the radiologist can also help guide the treatment by indicating the extent of the disease and the number of bone lesions, as it directly affects the treatment decision. Patients with an isolated bone lesion can be treated with radiation, whereas patients

with disseminated bone marrow involvement with multiple bone lesions, as in this case, are usually treated with systemic therapy. Since there are only a few published randomized clinical trials among patients with POEMS syndrome, treatment recommendations are still only based on limited trial data and case series. The most successful outcomes have been associated with therapy that is directed at treating the underlying plasma cell disorder rather than solely focusing on VEGF with targeted anti-VEGF therapy and this is typically done with alkylator based therapy, such as cyclophosphamide. Other therapeutic options include ASCT, bortezomib and lenalidomide.<sup>1</sup>

One can also differentiate POEMS syndrome from the Castleman disease variant of POEMS syndrome. The main difference is the latter is not associated with a monoclonal plasma cell disorder or polyneuropathy.<sup>1</sup> In terms of treatment, in patients with the Castleman disease variant, anti-IL-6 antibodies, anti-IL-6 receptor antibodies, and rituximab are therapies that should be considered in addition to alkylator and steroid-based therapy.<sup>7</sup> In this case, as both were present (monoclonal plasma cell disorder and polyneuropathy), it corresponded to a POEMS syndrome. Different ways of evaluating the response to therapy have been proposed, due to the multisystemic nature of the

disease. One can evaluate changes on the hematologic parameters, with a complete response happening when there is no evidence of monoclonal plasma cell disorder. Similarly, normal post-therapy VEGF levels also suggest a complete response. There is also a role for 18F-FDG-PET/CT in evaluation of the treatment response, in which absence of any FDG uptake would indicate complete response.<sup>1</sup>

In this case, only the hematologic parameters were taken into consideration, and the patient has not performed any follow-up imaging studies.

In terms of prognosis, in general patients have good progression free survival with modern therapies, with overall 6-year PFS of more than 50%. In those patients who achieve a complete response, the overall PFS is higher (5-year PFS 88%).<sup>1</sup>

It is important that every radiologist is aware of this syndrome and its diagnostic criteria. Particularly, the presence of diffuse sclerotic bone lesions in association with lymphadenopathy should raise the suspicion of a possible POEMS syndrome and encourage the radiologist to look for other signs/criteria. Additionally, when the diagnosis is suggested, the radiologist can also help guide treatment decisions by characterizing the extent of the bone marrow involvement.

#### Ethical disclosures / Divulgações Éticas

*Conflicts of interest:* The authors have no conflicts of interest to declare.

*Conflitos de interesse:* Os autores declaram não possuir conflitos de interesse.

*Financing Support:* This work has not received any contribution, grant or scholarship.

*Supporte financeiro:* O presente trabalho não foi suportado por nenhum subsídio ou bolsa.

*Confidentiality of data:* The authors declare that they have followed the protocols of their work center on the publication of data from patients.

*Confidencialidade dos dados:* Os autores declaram ter seguido os protocolos do seu centro de trabalho acerca da publicação dos dados de doentes.

*Protection of human and animal subjects:* The authors declare that the procedures followed were in accordance with the regulations of the relevant clinical research ethics committee and with those of the Code of Ethics of the World Medical Association (Declaration of Helsinki).

*Proteção de pessoas e animais:* Os autores declaram que os procedimentos seguidos estavam de acordo com os regulamentos estabelecidos pelos responsáveis da Comissão de Investigação Clínica e Ética e de acordo com a Declaração de Helsínquia da Associação Médica Mundial.

#### References

1. Dispenzieri A. POEMS syndrome: 2021 Update on diagnosis, risk-stratification, and management. *American Journal of Hematology*. 2021;96:872-88.

2. Pan Q, Li J, Li F, Zhou D, Zhu Z. (2015). Characterizing POEMS Syndrome with 18F-FDG PET/CT. *Journal of Nuclear Medicine*. 2015;56:1334-7.

3. Shi XF, Hu SD, Li JM, Luo XF, Long ZB, Zhu Y, Xi XD. Multimodal imaging and clinical characteristics of bone lesions in POEMS syndrome. *International Journal of Clinical and Experimental Medicine*. 2015;8:7467-76.

4. Shi X, Hu S, Luo X, Luo M, You H, Zhu Y, Xi X. CT characteristics in 24 patients with POEMS syndrome. *Acta Radiologica*. 2016;57:51-7.

5. Bonekamp D, Horton KM, Hruban RH, Fishman EK. Castleman disease: the great mimic. *Radiographics*. 2011;31:1793-807.

6. Koa B, Borja AJ, Aly M, Padmanabhan S, Tran J, Zhang V, Rojulpote C, Pierson SK, Tamakloe MA, Khor JS, Werner TJ, Fajgenbaum DC, Alavi A, Revheim ME. Emerging role of 18F-FDG PET/CT in Castleman disease: a review. *Insights into Imaging*. 2021;12:35.

7. Dispenzieri A. (2012). How I treat POEMS syndrome. *Blood*. 2012;119:5650-8.