



ORIGINAL ARTICLE

Acute Treatment of Malignant Colorectal Occlusion: Real Life Practice



Dália Fernandes*, Sara Domingues, Bruno Moreira Gonçalves, Pedro Bastos,
Aníbal Ferreira, António Rodrigues, Raquel Gonçalves, Luís Lopes, Carla Rolanda

Gastroenterology Department, Hospital de Braga, Braga, Portugal

Received 5 May 2015; accepted 2 October 2015

Available online 29 January 2016

KEYWORDS

Colorectal
Neoplasms;
Intestinal
Obstruction;
Stents

Abstract

Introduction: Colorectal cancer presents itself as acute bowel occlusion in 10–40% of patients. There are two main therapeutic approaches: urgent surgery and endoluminal placement self-expandable metallic stents (SEMS).

Aims and Methods: This study intended to better clarify the risk/benefit ratio of the above-mentioned approaches. We conducted a retrospective longitudinal multicenter study, including 189 patients with acute malignant colorectal occlusion, diagnosed between January 2005 and March 2013.

Results: Globally (85 patients – 35 bridge-to-surgery and 50 palliative), SEMS's technical success was of 94%. Palliative SEMS had limited clinical success (60%) and were associated with 40% of complications. SEMS occlusion (19%) was the most frequent complication, followed by migration (9%) and bowel perforation (7%). Elective surgery after stenting was associated with a higher frequency of primary anastomosis (94% vs. 76%; $p=0.038$), and a lower rate of colostomy (26% vs. 55%; $p=0.004$) and overall mortality (31% vs. 57%; $p=0.02$). However, no significant differences were identified concerning postoperative complications. Regarding palliative treatment, no difference was found in the complications rate and overall mortality between SEMS and decompressive colostomy/ileostomy. In this SEMS subgroup, we found a higher rate of reinterventions (40% vs. 5%; $p=0.004$) and a longer hospital stay (14, nine vs. seven, three days; $p=0.004$).

Conclusion: SEMS placement as a bridge-to-surgery should be considered in the acute treatment of colorectal malignant occlusion, since it displays advantages regarding primary anastomosis, colostomy rate and overall mortality. In contrast, in this study, palliative SEMS did not appear to present significant advantages when compared to decompressive colostomy.

© 2015 Sociedade Portuguesa de Gastrenterologia. Published by Elsevier España, S.L.U. This is an open access article under the CC BY-NC-ND license (<http://creativecommons.org/licenses/by-nc-nd/4.0/>).

* Corresponding author.

E-mail address: daliafernandes09@gmail.com (D. Fernandes).

PALAVRAS-CHAVE

Neoplasias
Colorrectais;
Obstrução Intestinal;
Stents

Tratamento Agudo da Oclusão Colorrectal Maligna: Prática na Vida Real**Resumo**

Introdução: O cancro colorrectal manifesta-se como oclusão intestinal aguda em 10–40% dos doentes. Existem duas abordagens terapêuticas principais: cirurgia de urgência e prótese endoluminal.

Objectivo e Métodos: Este estudo teve como objetivo clarificar o risco/benefício das abordagens mencionadas. Foi realizado um estudo multicêntrico, retrospectivo longitudinal, que incluiu 189 doentes com oclusão colorrectal maligna aguda, diagnosticados entre janeiro de 2005 e março de 2013.

Resultados: Globalmente (85 pacientes – 35 como ponte para cirurgia e 50 como palição) a colocação de prótese teve sucesso técnico de 94%. As próteses paliativas apresentaram sucesso clínico limitado (60%) e associaram-se a 40% de complicações. A oclusão tumoral da prótese (19%) foi a complicação mais frequente, seguindo-se a migração (9%) e a perfuração intestinal (7%). A cirurgia eletiva após colocação de prótese associou-se a maior frequência de anastomoses primárias (94% vs 76%; $p=0.038$) e a menores taxas de colostomia (26% vs 55%; $p=0.004$) e mortalidade (31% vs 57%; $p=0.02$). Contudo, não houve diferenças significativas nas complicações pós-cirúrgicas. No tratamento paliativo, a prótese e a colostomia/ileostomia descompressiva não apresentaram diferenças significativas nas complicações ou mortalidade. Neste subgrupo de próteses, observou-se elevada taxa de reintervenção (40% vs 5%; $p=0.004$) e de tempo de internamento (14,9 vs 7,3 dias; $p=0.004$).

Conclusão: A colocação de prótese como ponte para a cirurgia deve ser considerada no tratamento agudo da oclusão maligna colorrectal, pois apresenta vantagens nas taxas de anastomoses primárias, colostomias e mortalidade. Em contraste, neste estudo as próteses paliativas não apresentaram vantagem clínica significativa em comparação à colostomia descompressiva.

© 2015 Sociedade Portuguesa de Gastrenterologia. Publicado por Elsevier España, S.L.U. Este é um artigo Open Access sob a licença de CC BY-NC-ND (<http://creativecommons.org/licenses/by-nc-nd/4.0/>).

1. Introduction

Colorectal cancer (CRC) is the fourth most common tumor worldwide¹ and one of the cancers with the highest incidence and mortality in Portugal.²

CRC presents itself as acute intestinal occlusion in 10–40% of patients.^{1,3–9} This is more common when the tumor is located in the left colon⁴ and results in a higher postoperative mortality (12%) when compared to non-occlusive tumors (3.5%).¹⁰

Currently, there are two main approaches for acute decompression: the traditional urgent surgery and the endoluminal placement of self-expandable metallic stents (SEMS).^{3,4,11–13} Urgent surgical resection usually involves a defunctioning stoma with or without primary resection of the obstructing tumor. Additionally, it is associated with a high mortality (15–34%) and morbidity (15–64%) when compared to elective surgery (0.9–6%).^{1,3,11,14–16} Therefore, non-surgical approaches have been proposed as an alternative. Among them, SEMS placement has been increasingly used for the relief of colonic occlusion symptoms, since its first application in the early 1990s.

The endoluminal endoscopic approach is theoretically advantageous, allowing the circumvention of an emergency surgical intervention which, besides the already mentioned implications, results in a permanent colostomy in 50–66% of cases.^{1,3,4,11,14,16} Additionally, it allows palliative treatment without any surgical intervention.^{3,4,12,15,17} Thus, SEMS placement can be used as a bridge to elective surgery

in patients with potential for curative resection or palliative treatment in patients who cannot undergo surgery or with advanced disease. However, SEMS placement also has complications (21.0–34.4%),^{5,8,16} namely bowel perforation (1.2–13%), migration (1.2–11.8%) and reocclusion by tumor ingrowth (1.8–9%).^{3,7,8,16,18} Moreover, SEMS does not appear to provide a significant improvement in the overall survival or in the long term prognosis.^{13,14,19}

Many investigations have tried to compare SEMS vs. surgery. However, the reported results are diverse, the randomized studies are scarce and globally the population samples per study are small and have varying criteria for outcomes measurement. With this study, we aim to clarify the risk/benefit ratio of these approaches in real clinical practice, comparing: (a) SEMS placement with curative and palliative purposes; (b) SEMS placement as bridge-to-surgery vs. urgent surgery (curative purpose); (c) SEMS placement vs. urgent surgery (palliative purpose).

2. Aims and methods**2.1. Study design**

This is a retrospective longitudinal nonrandomized multicenter study, involving two hospitals: Braga Hospital and Unidade Local de Saúde do Alto Minho (ULSAM). We studied all patients with acute malignant colorectal occlusion that were treated by stenting or surgery between January 2005

and March 2013. Patients' data were collected by analyzing all clinical, endoscopic, radiologic and surgical reports (manual and electronic records).

The inclusion criteria were: an acute colorectal occlusion caused by colorectal malignancy which underwent SEMS placement or urgent surgery, in the determined period. Patients with incomplete data or admitted with clinical symptoms of bowel perforation were excluded from the study.

2.2. Colorectal occlusion diagnosis and management

Diagnosis of acute colorectal occlusion was based on classical clinical and imaging findings: abdominal distension and pain, nausea and vomiting without normal emission of stool or air and a dilated colon in the abdominal radiography. Malignant origin and tumor location were determined using flexible sigmoidoscopy or abdominal computerized tomography and confirmed by biopsy/specimen evaluation. Patients then underwent either endoscopic stenting or urgent surgery, according to the availability of resources at each moment and clinical particularities. Before acute therapeutic procedures, some patients already had a presumptive orientation – possible curative or palliative purpose.

2.3. Stenting

SEMS placement was performed by experienced endoscopists (>20 procedures) in both hospitals, according to the generally accepted procedure – usually through-the-scope using a double channel therapeutic endoscope under fluoroscopic guidance or direct endoscopic vision if the stricture could be previously crossed with an ultra-slim endoscope. Five types of uncovered colonic stents were used, according to the hospital's availability, with no pre-dilation: Wallflex[®], Wallstent[®] and Ultraflex[®] (Boston Scientific), Evolution[®] (Cook Medical) and Hanarostent[®] (MITec). After SEMS placement, immediate signs of decompression were once again evaluated and clinical examination and a plain abdominal radiography were usually repeated to assess the procedure's success and exclude complications.

2.4. Urgent surgery

Urgent surgery was performed through laparotomy and the type of operation was determined based on tumor location, patient's general condition and the surgeon's experience. The surgical options included: one-stage procedure with primary anastomosis; two-stage procedure with segmentectomy and terminal colostomy (Hartmann's procedure) or segmentectomy with primary anastomosis and protecting ostomy; and three-stage procedure such as loop colostomy followed by segmentectomy maintaining the protective colostomy, to be closed at a later date.

After having adequate treatment, patients received supportive care and adequate disease staging in order to decide the treatment purpose (curative vs. palliative). This decision was performed by an oncological decision group. According

to their general condition, patients underwent other treatments such as elective surgery, chemotherapy and radiation therapy. However, most of these were not in the scope of this work.

2.5. Study variables and outcomes

Patients' data were collected from the acute event until the last follow-up. Two main population groups were created, the "SEMS placement group" and the "Urgent surgery group"; then each one was divided into two subgroups according to the treatment purpose – "curative" and "palliative". Baseline characteristics and outcomes of the procedure were documented and compared with the two major population groups studied.

Technical success in SEMS was defined as the successful placement of the stent across the malignant stricture allowing for patency. Clinical success was achieved when there was colonic decompression with obstructive symptom relief and without any complications requiring endoscopic or surgical reintervention. Patency (mainly for stent palliation) was defined as the period (in days) between SEMS placement and recurrence of obstructive symptoms or until a patient was lost in the follow-up or died. In SEMS bridge-to-surgery group, the time for surgery was defined as the number of days between SEMS placement and elective surgery.

Complications were defined as any adverse event related to SEMS placement or urgent surgery, leading to hospital readmission or prolonging the current hospital stay. Early and late complications were considered, as they occurred within 30 days or more after the time of the procedure, respectively. Concerning the overall complications, the elective surgery after stenting group's complications included those related to the SEMS placement, elective surgery and subsequent bowel reconstruction/recovery surgeries. Regarding the urgent surgery group, the overall complications included all those after urgent surgery and subsequent surgeries and ultimately bowel reconstruction/recovery.

Mortality was assessed as procedure-related death, occurring 30 days after intervention and as overall mortality during follow-up. Overall survival was calculated as the time interval from the date of the SEMS insertion or urgent surgery until the date of death or of the last follow-up. The overall length of hospital stay included, for each patient, the number of days as an inpatient during follow-up (acute procedures, surgeries, complications management).

As major outcome measurements for analytical comparison of colonic stenting vs. urgent surgery, we considered the overall rates of clinical success, primary anastomosis, colostomy rate, complications, hospital stay, mortality rate and overall survival.

2.6. Statistical analysis

Statistical analysis was performed using the Statistical Package for Social Sciences[®] (SPSS) software.

In order to compare SEMS as a bridge-to-surgery vs. Palliative SEMS and SEMS placement vs. urgent surgery, Student's *t* test (*t*) or Wilcoxon-Mann-Whitney test (*Z*) was used for quantitative variables (presented as mean ± standard

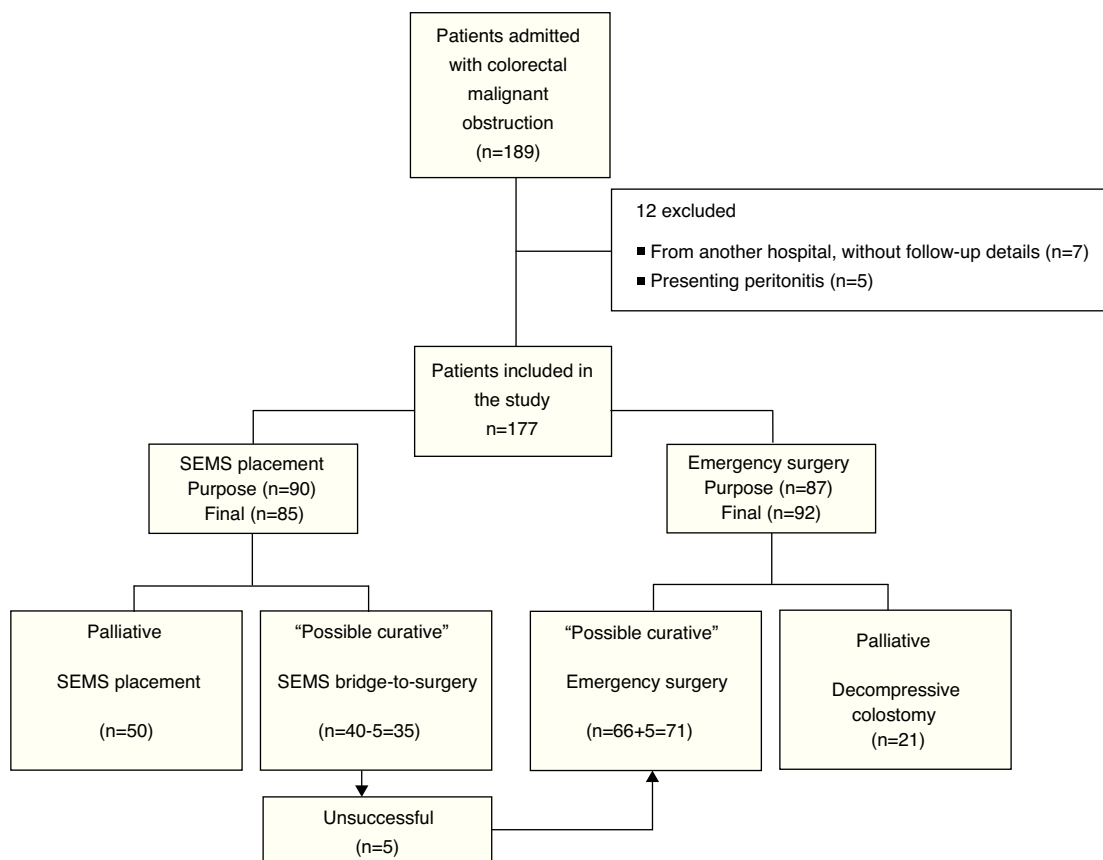


Figure 1 Flowchart of patients' management.

deviation (SD)) and chi-square test (X^2) or Fisher's exact test were used for qualitative variables. The Kaplan–Meier method was performed to estimate median survival times of the SEMS and urgent surgery groups and the receiver operating characteristics (ROC) curve analysis was undertaken to identify a potential optimal threshold time to perform elective surgery after SEMS placement. The binary logistic regression model was applied to evaluate risk factors related to overall complications and mortality after treatment of acute malignant colorectal occlusion.

A p value less than or equal to 0.05 was considered to be statistically significant.

3. Results

Between January 2005 and March 2013, 189 patients were diagnosed with malignant colorectal occlusion of which 12 were immediately excluded (seven from another hospital, without follow-up details and five with specific exclusion criteria). Thus, the population of this study included 177 patients, 85 of which underwent SEMS placement and 92 urgent surgery. In five patients proposed for SEMS as a bridge-to-surgery, stenting was not possible due to technical reasons; this was considered in the SEMS technical success calculations. However, in the general analysis these patients ended up in the urgent surgery group. Therefore, on the SEMS group, 35 were performed as a bridge-to-surgery and 50 as a definitive treatment (palliation). In the group

of patients who underwent urgent surgery, the tumor was resected in 71 by colectomy with primary anastomosis or Hartmann's procedure, while 21 underwent only decompressive colostomy/ileostomy (palliation). [Fig. 1](#) presents the flowchart of the patients' management.

3.1. Demographic, clinical characteristics and tumor features

The descriptive and global comparative analysis of the population studied (two main groups) is presented in [Table 1](#). There were no noteworthy differences in patient characteristics or outcome between malignant occlusion treated in Braga Hospital and ULSAM.

Patients undergoing SEMS placement were older (73 vs. 68 years, $p=0.006$) and more likely to have Diabetes mellitus (43% vs 22%, $p=0.011$) or cardiovascular disease (33% vs. 13%, $p=0.009$). On the other hand, patients submitted to urgent surgery had more severe anemia (15% vs 0%, $p=0.049$) and higher CRP values (84% vs 50%, $p=0.010$). Most patients presented complete occlusion (67%) of the left colon (83%). However, the right colon was more frequently approached by surgery. The Dukes classification was also significantly different between the two groups: D stage was more frequent in the SEMS group (50%) and B stage in the urgent surgery group (39%). This was to be expected, considering the purpose of treatment: mainly palliative in patients undergoing

Table 1 Demographic, clinical characteristics and tumor features of patients with malignant colorectal occlusion.

Outcomes	Total ^a (n = 177)	SEMS (n = 85)	Urgent surgery (n = 92)	p Value
Demographic characteristics				
Age (years), mean ± Standard deviation (range)	70.5 ± 13.0 (34–95)	73.3 ± 11.8 (46–95)	68.0 ± 13.5 (34–91)	0.006
Gender, n (%)				
Male	108 (61.0)	53 (62.4)	55 (59.8)	0.726
Female	69 (39.0)	32 (37.6)	37 (40.2)	
Average BMI ± SD: kg/m ² (range)	24.1 ± 5.0 (14.9–39.1)	24.7 ± 4.8 (14.9–35.9)	25.1 ± 5.1 (17.7–39.1)	0.690
Clinical characteristics				
Medical comorbidities, n (%) ^b	122 (69.7)	58 (59.0)	64 (70.3)	0.854
Hypertension	91 (64.1)	50 (67.6)	41 (60.3)	0.367
Diabetes Mellitus	40 (31.7)	25 (43.1)	15 (22.1)	0.011
Cardiovascular disease	28 (22.2)	19 (32.8)	9 (13.2)	0.009
Pulmonary disease	14 (11.1)	6 (10.3)	8 (11.8)	0.800
Renal disease	10 (7.9)	7 (12.1)	3 (4.4)	0.185
Gastrointestinal disease	24 (19.0)	9 (15.5)	15 (22.1)	0.351
ASA scoring, n (%)				0.354
I	12 (9.4)	4 (10.5)	8 (8.9)	
II	57 (44.5)	21 (55.3)	36 (40.0)	0.049
III	39 (30.5)	8 (21.1)	31 (34.4)	
IV	20 (15.6)	5 (13.2)	15 (16.7)	0.066
Blood parameters, n (%)				
Anemia (Hb < 13 g/dL – in men; Hb < 12 g/dL – in women)	46 (39.7)	12 (38.7)	34 (40.0)	0.010
Severe anemia (Hb < 8 g/dL)	13 (11.2)	0	13 (15.3)	
Leucocytosis (>10.000)	32 (29.6)	3 (13.6)	29 (33.7)	
CRP increase (>2.50 mg/dL)	46 (74.2)	9 (50.0)	37 (84.1)	
Tumor features				
Location, n (%)				0.001
Left colon	146 (82.5)	77 (90.6)	69 (75.0)	
Transverse colon	14 (7.9)	7 (8.2)	7 (7.6)	0.061
Right colon	17 (9.6)	1 (1.2)	16 (17.4)	
Type of occlusion, n (%)				0.011
Complete	113 (67.3)	48 (60.0)	65 (73.9)	
Partial	55 (32.7)	32 (40.0)	23 (26.1)	
Dukes classification, n (%)				
A	1 (0.6)	1 (1.2)	0	
B	54 (32.7)	22 (26.8)	32 (38.6)	
C	46 (27.9)	18 (22.0)	28 (33.7)	
D	64 (38.8)	41 (50.0)	23 (27.7)	
Treatment purpose				
Curative, n (%)	106 (59.9)	35 (41.2)	71 (77.2)	0.001
Palliative, n (%)	71 (40.1)	50 (58.8)	21 (22.8)	

^a Total-group that underwent SEMS placement plus group that underwent urgent surgery.

^b More than one patient had more than one medical comorbidity.

SEMS placement (59%) and curative in patients submitted to urgent surgery (77%).

3.2. Procedure details and analysis

3.2.1. Global SEMS placement (bridge-to-surgery and palliative)

Technical success was obtained in 94% (85/90) of patients in whom SEMS placement was attempted (Table 2). Technical

failure occurred in five patients with complete occlusion and subsequent inability to pass the guide wire.

Colon decompression associated to symptom relief was maintained without any complication or need for reintervention in 70% of the patients until elective surgery in the SEMS as a bridge-to-surgery group or up to death in the palliative group. The clinical success was significantly higher in patients undergoing SEMS as a bridge-to-surgery (83% vs 60%, $p = 0.024$). SEMS occlusion was the most frequent late

Table 2 Comparison of the two main groups of SEMS placement (SEMS as bridge-to-surgery vs palliative SEMS).

Outcomes	Total (n = 85)	SEMS as bridge-to-surgery (n = 35)	Palliative SEMS (n = 50)	p Value
Technical success, n (%)	85 (94.4)	–	–	–
Clinical success, n (%)	59 (69.4)	29 (82.9)	30 (60.0)	0.024
Complications, n (%) ^a	26 (30.6)	6 (17.1)	20 (40.0)	0.024
Stent occlusion	16 (18.8)	3 (8.6)	13 (26.0)	0.043
Stent migration	8 (9.4)	3 (8.6)	5 (10.0)	1.000
Bowel perforation	6 (7.1)	0	6 (12.0)	0.040
Early complications, n (%)	12 (44.4)	3 (50.0)	9 (42.9)	1.000
Late complications, n (%)	16 (59.3)	3 (50.0)	13 (61.9)	0.662
Reinterventions, n (%)	26 (30.6)	6 (17.1)	20 (40.0)	0.024
Urgent surgery	11 (42.3)	1 (16.7)	10 (50.0)	0.197
Stent reinsertion	15 (57.7)	5 (83.3)	10 (50.0)	0.197
Mortality, n (%)				
30-day mortality	8 (16.3)	1 (10.0)	7 (17.9)	1.000
Overall mortality	49 (61.3)	10 (31.3)	39 (81.3)	0.001
Survival (days), mean ± SD (range)	853.3 ± 125.8 (2–2684)	1620.4 ± 237.2 (18–2684)	421.3 ± 83.9 (2–1931)	0.001
Stent patency (days), mean ± SD (range)	–	–	154.5 ± 151.8 (1–553)	–
Time to surgery (days), mean ± SD (range)	–	21.1 ± 18.7 (3–77)	–	–

^a More than one patient had more than one complication.

complication (19%), followed by SEMS migration (9%). Bowel perforation was less frequent (7%), occurring shortly after the endoscopic procedure. The stents and respective numbers used were Wallflex® (45) Hanarostent® (32), Wallstent® (3), Ultraflex (3) and Evolution® (2). We found no differences in their use between bridge-to-surgery and palliative purposes and, in a general analysis, no significant differences related to clinical success or complication rate between them were found.

In five of six patients with SEMS as a bridge-to-surgery, the complication was solved by insertion of a new SEMS while in patients with palliative SEMS the complication was solved endoscopically in half of the cases and surgically in the other half. In SEMS as a bridge-to-surgery, the average time elapsed between SEMS placement and elective surgery was 21 days. The ROC curve analysis could not identify the most favorable time between SEMS placement and elective surgery (area under the ROC curve 0.465). The patency of SEMS in the palliation group was five months, which was significantly lower than the average time of survival of these patients (14 months).

3.2.2. Elective surgery after SEMS placement vs. urgent surgery

The comparative analysis between these two main groups is presented in Table 3. Concerning clinical success, no significant differences were observed between the groups, although it was slightly higher in the elective surgery group.

The segmental colectomy was the most frequent approach, both in the elective surgery after SEMS group (86%) and in the urgent surgery group (59%). However, patients submitted to urgent surgery presented a higher

number of Hartmann's (41% vs 14%, $p=0.006$) and thus a higher number of stoma (55% vs 26%, $p=0.004$), while most patients that underwent elective surgery after SEMS had a one-stage surgery and therefore having primary anastomosis in the majority of situations (94% vs. 76%, $p=0.038$).

Regarding postoperative complications, there was a trend, not statistically significant, for a higher occurrence in patients undergoing urgent surgery (peritonitis, with or without septic shock, intra-abdominal abscess and anastomotic leakage were the most common). Concerning overall complications (abdominal and extra-abdominal) we did not find significant differences. The urgent surgery carried more blood transfusions during surgery and the patients were also more frequently admitted in the intensive care unit (ICU), although this was not statistically significant.

The hospital stay was longer in the elective surgery after SEMS group. However, total hospital stay and costs for reinterventions or late complications in the emergency surgery group were superior.

When analyzing mortality results, procedure-related mortality was not significantly different between the two groups, but overall mortality was significantly higher in the urgent surgery group (57% vs 31%, $p=0.020$).

Concerning the overall complications, the logistic model (Table 4) identified patients' age and CRP levels as predictive risk factors: the increase of five years of age was associated with a 3.3 higher risk of complications, and patients with increased CRP values were 10.5 times more prone to complications.

Concerning mortality, the logistic model (Table 5) identified patients' age and the acute approach as predictive risk factors: the increase of five years of age and the urgent

Table 3 Comparison of outcomes obtained with elective surgery after SEMS placement vs. urgent surgery.

Outcomes	Total (n = 106)	Elective surgery after SEMS placement (n = 35)	Urgent surgery (n = 71)	<i>p</i>
Clinical success, n (%)	84 (79.2)	28 (80.0)	55 (77.5)	0.766
Type of surgery, n (%)				0.006
Hartmann's procedure	34 (32.1)	5 (14.3)	29 (40.8)	
Segmentectomy	72 (67.9)	30 (85.7)	42 (59.2)	0.038
Primary anastomosis	72 (82.8)	30 (93.8)	42 (76.4)	
Colostomy rate, n (%)	48 (45.3)	9 (25.7)	39 (54.9)	0.004
Postoperative complications, n (%) ^a	45 (42.5)	12 (34.3)	33 (46.5)	0.232
Early complication, n (%)	38 (82.6)	9 (75.0)	29 (85.3)	0.412
Late complication, n (%)	15 (32.6)	3 (25.0)	12 (35.3)	0.513
Overall complications, n (%)	53 (50.0)	16 (45.7)	37 (52.1)	0.536
Reinterventions, n (%)	23 (21.7)	7 (20.0)	16 (22.5)	0.766
Emergent surgery	21 (87.5)	5 (62.5)	16 (100)	0.028
Elective surgery	4 (16.7)	2 (25.0)	2 (12.5)	0.578
Hospital stay (days), mean ± SD (range)	23.37 ± 26.05 (1–179)	25.9 ± 20.3 (1–91)	22.2 ± 28.4 (2–179)	0.034
Mortality, n (%)				
30-day mortality	8 (18.2)	1 (10.0)	7 (20.6)	0.659
Overall mortality	44 (47.8)	10 (31.3)	34 (56.7)	0.020

^a More than one patient had more than one complication.

Table 4 Predictors of overall complications in patients with curative purpose (patients who experienced elective surgery after SEMS placement and patients submitted to urgent surgery).

Variables	<i>P</i>	Exp (<i>B</i>) ^a
Type of acute treatment	0.750	1.267
Age	0.008	3.3
Medical comorbidities	0.093	0.255
CRP increase	0.009	10.462

^a Exp (*B*) – exponentiation of the *B* coefficient, which is an odds ratio.

Table 5 Predictors of mortality in patients with curative purpose.

Variables	<i>P</i>	Exp (<i>B</i>)
Age	0.008	1.4
Medical comorbidities	0.753	1.185
Type of acute treatment	0.006	4.016

surgery were associated with a 1.4 and a four higher risk of death respectively, when compared with SEMS group. The medical comorbidities were not revealed to be a predictive risk factor.

3.2.3. Palliative SEMS vs. Urgent surgery (decompressive colostomy)

In palliative treatment, urgent surgery obtained a higher clinical success than palliative SEMS, although these results were not statistically significant (81% vs 60%, *p*=0.089)

(Table 6). Palliative SEMS was associated with more complications and therefore more reinterventions (out of 19 patients, 11 were submitted to surgery and eight to insertion of new SEMS) and a longer hospital stay. These two last outcomes were statistically significant. The percentage of patients treated with chemotherapy was not significantly different when comparing both groups (35% in the SEMS group and 29% in the urgent surgery group). Regarding mortality, no statistically significant differences were observed between the two groups, although, once again, the urgent surgery group presented a slightly higher mortality.

4. Discussion

The aim of this study was to assess and compare the risk/benefit ratio of SEMS colorectal placement vs. urgent surgery in the treatment of acute colorectal occlusion, either with a curative or palliative purpose.

Regarding the SEMS group, the endoscopic procedure was performed in 41% of patients as a bridge-to-surgery and in 59% of patients as a palliative approach. We obtained a technical success of 94%, which is consistent with the literature.^{5,14,18,20} The clinical success in SEMS as bridge-to-surgery was significantly higher when compared to palliative SEMS (83% vs 60%). In published data, the clinical success in SEMS as a bridge-to-surgery presents similar values (69–94%),^{6,18,21} while in palliative SEMS the values reported are 76–93%.^{5,22} This difference may be explained by the variable definition of clinical success in different studies. We consider the same definition for both SEMS subgroups – obstructive symptom relief, without any complications requiring endoscopic or surgical reintervention – and, as

Table 6 Comparison of outcomes obtained with palliative SEMS vs. decompressive colostomy.

Outcomes	Total (n = 71)	Palliative SEMS (n = 50)	Decompressive colostomy/ileostomy (n = 21)	p
Clinical success, n (%)	47 (66.2)	30 (60.0)	17 (81.0)	0.089
Complications, n (%) ^a	26 (36.6)	20 (40.0)	6 (28.6)	0.362
Early complications, n (%)	12 (44.4)	9 (42.9)	3 (50.0)	1.000
Late complications, n (%)	16 (59.3)	13 (61.9)	3 (50.0)	0.662
Reinterventions, n (%)	20 (29.0)	19 (40.4)	1 (5.0)	0.004
Colostomy rate, n (%)	32 (41.1)	11 (22.0)	21 (100)	0.001
Chemotherapy administration, n (%)	23 (32.9)	17 (34.7)	6 (28.6)	0.617
ICU, n (%)	2 (2.8)	2 (4.0)	0	1.000
Hospital stay (days), mean ± SD (range)	12.6 ± 10.5 (1–51)	14.9 ± 11.6 (1–51)	7.3 ± 4.3 (1–15)	0.004
Mortality, n (%)				
30-day mortality	13 (23.2)	7 (17.9)	6 (35.3)	0.157
Overall mortality	56 (84.8)	39 (81.3)	17 (94.4)	0.264
Survival (days), mean ± SD (range)	294.7 ± 47.1 (1–1931)	296.3 ± 59.7 (2–1931)	290.9 ± 75.7 (1–848)	0.988

^a More than one patient had more than one complication.

would be expected, this has shown to be very restrictive in the case of palliative SEMS, with longer hospital stay and a higher probability of complications and need for reintervention.

After SEMS placement, 31% of the patients had complications, mainly later ones. These data are consistent with some studies reporting complication rates between 21 and 34%.^{5,8,16} However, the complication rate in the palliative patients was higher (40%), probably due to the previously mentioned reason. It is also suggested that the operator's technical experience^{8,23–25} and the endoscopic device characteristics^{26,27} can influence the procedure's safety and accuracy. In our study the endoscopist was not always the same but was always experienced and the different stents used did not present significant differences in the main outcome – clinical success.

In patients treated with a curative purpose, the clinical success obtained in SEMS as a bridge-to-surgery was slightly higher, compared to the urgent surgery group. This result is supported by several studies reporting higher clinical success rates after SEMS placement,^{6,8,21,28,29} although a recent meta-analysis revealed significantly higher clinical success rates in the urgent surgery.⁷ In addition, the SEMS group obtained a significantly higher number of primary anastomosis, associated to a significant reduction in colostomy rate, as reported by other authors.^{3,7,8,13,14,25,30} In the literature some advantages of primary anastomosis in one-stage are pointed out, specifically, the decrease of hospital costs and complications associated to colostomy and also avoiding the risks of a second intervention.⁹ Although few studies evaluated the impact that each procedure has in the patients' quality of life, the colostomy has been associated with anxiety, depression, sleep alterations and social reclusion,^{6,31,32,34} features that can be overcome by an elective surgery preceded by stenting.

When analyzing postoperative complications, we did not identify significant differences between the two

groups, even though elective surgery presented fewer complications. This is probably due to a lesser preoperative risk associated with the gap time between SEMS placement and surgery, allowing a proper clinical evaluation, better bowel conditions and nutritional optimization, as supported by other publications.^{1,7,8,21} Even though, there are some studies^{8,21} suggesting an optimum time between SEMS placement and elective surgery around six and 14 days, we were not able to consistently define the appropriate gap time in this analysis.²¹ The elective surgery was performed, in average, 21 days after the stent placement, which may have contributed to an unexpected higher number of complications in this group.

When comparing other important outcomes, urgent surgery patients required more ICU admittance and more reinterventions due to postoperative complications. This group also presented a non-statistical trend toward a higher need of blood transfusion. The two single studies reporting these variables are in agreement with our results.^{34,35} After the acute procedure, the discharge occurred earlier in the SEMS group, but the global hospital stay was longer due to reinterventions. Despite the longer hospital stay of patients submitted to stenting as a bridge-to-surgery, this procedure seems to be more effective and associated with 12–20% less costs than the urgent surgery,^{36–38} which may be substantiated by the lower ICU admittance and reintervention rates.

To our knowledge, few studies compare the palliation approaches – acute palliative SEMS and decompressive colostomy/ileostomy – and have contradictory findings. Our results suggest that palliative SEMS does not have a significant advantage over palliative surgery for decompressing unresectable malignant colorectal occlusion because some patients had higher survival than expected and consequently had more complications and significantly more need for reinterventions and a hospital stay. This finding is consistent with a previous study also revealing higher complications

rate in SEMS used in patients with advanced and metastatic colon cancer six months after SEMS placement. Nevertheless, the author added and we confirm, that part of these SEMS complications can be managed by stent replacement, without a significant increase in morbidity and mortality.³⁹ On the other hand, a recent meta-analysis,⁴⁰ demonstrates that SEMS is as effective as surgery, with shorter hospital stay, quicker recovery and comparable risk of short-term complications and mortality. However, these are mainly short-term outcomes and the study also showed a higher risk of long-term complications with SEMS. Liang et al.⁴⁰ confirmed a general problem among the studies found in literature, remarking that the lack of data or the greater heterogeneity in primary studies precluded the analysis of other outcomes such as readmission and survival time.

Concerning the limitations of this study, the most important were the retrospective and therefore nonrandomized and uncontrolled design. It prevents us from having groups with similar population samples and characteristics, which can consequently bias the results. Additionally, we were not able to reliably evaluate the influence of the operator's experience in the obtained surgical outcomes.

5. Conclusion

SEMS placement as a bridge-to-surgery should be considered in the acute treatment of malignant colorectal occlusion, where it seems to be an effective and safer procedure, associated with a higher primary anastomosis rate and, consequently, a lower colostomy rate, number of complications and procedure-related mortality.

SEMS placement as palliative treatment does not seem to present significant clinical advantages comparatively to decompressive colostomy/ileostomy when treating an unresectable malignant occlusion and the longer the SEMS stays in place the higher is the risk of complications. So, unless the patient obstinately refuses the idea of having a stoma, patients with advanced local disease, but good general condition, in which a slightly longer survival is expected, surgery may be the best option. However, further studies comparing the two possible approaches of malignant colonic occlusion are needed, especially prospective and randomized ones. It will also be important to evaluate the impact of each procedure on the patients' quality of life.

Ethical disclosures

Protection of human and animal subjects. The authors declare that no experiments were performed on humans or animals for this study.

Confidentiality of data. The authors declare that no patient data appear in this article.

Right to privacy and informed consent. The authors declare that no patient data appear in this article.

Conflicts of interest

The authors have no conflicts of interest to declare.

References

1. Ferlay J, Shin HR, Bray F. GLOBOCAN 2008, Cancer incidence and mortality worldwide. 2012; 2012. Available at: <http://globocan.iarc.fr> [cited 01.09.15].
2. Miranda N, Nogueira PJ, Silva AJ. Portugal – Doenças Oncológicas em números – 2013; 2013. Available at: <http://www.dgs.pt/estatisticas-de-saude/estatisticas-desauade/publicacoes/portugal-doencas-oncologicas-em-numeros-2013.aspx> [cited 14.08.15].
3. Canena JM. Próteses no tubo digestivo: evolução e aplicações no século XXI. Lisboa; 2012. p. 89–114.
4. Athreya S, Moss J, Urquhart G, Edwards R, Downie A, Poon FW. Colorectal stenting for colonic obstruction: the indications, complications, effectiveness and outcome – 5 year review. *Eur J Radiol.* 2006;60:91–4.
5. Canena JM, Liberato M, Marques I, Rodrigues CI, Lagos AC, Patrocínio SD, et al. Sustained relief of obstructive symptoms for the remaining life of patients following placement of an expandable metal stent for malignant colorectal obstruction. *Rev Esp Enferm Dig.* 2012;104:418–25.
6. Tan CJ, Dasari BVM, Gardiner K. Systematic review and meta-analysis of randomized clinical trials of self-expanding metallic stents as a bridge to surgery versus urgent surgery for malignant left-sided large bowel obstruction. *Br J Surg.* 2012;99:469–76.
7. Cirocchi R, Farinella E, Trastulli S, Desiderio J, Listorti C, Boselli C, et al. Safety and efficacy of endoscopic colonic stenting as a bridge to surgery in the management of intestinal obstruction due to left colon and rectal cancer: a systematic review and meta-analysis. *Surg Oncol.* 2013;22:14–21.
8. Gianotti L, Tamini N, Nespoli L, Rota M, Bolzonaro E, Frego R, et al. A prospective evaluation of short-term and long-term results from colonic stenting for palliation or as a bridge to elective operation versus immediate surgery for large-bowel obstruction. *Surg Endosc.* 2013;27:832–42.
9. Ghazal AH, El-Shazly WG, Bessa SS, El-Riwini MT, Hussein AM. Colonic endolumenal stenting devices and elective surgery versus emergency subtotal/total colectomy in the management of malignant obstructed left colon carcinoma. *J Gastrointest Surg.* 2013;17:1123–9.
10. López-Rosés L, González-Ramírez A, Lancho A, Santos A, Olivençia P. Endoscopic treatment of acute colorectal obstruction with self expanding metallic stents. *Surg Endosc.* 2006;20:1072–6.
11. Sagar J. Colorectal stents for the management of malignant colonic obstructions. *Cochrane Database Syst Rev.* 2011;11:CD007378.
12. Tirosh D, Perry Z, Walfisch S, Rozental A, Fich A, Krugliak P, et al. Endoscopic self-expanding metal stents for acute colonic obstruction. *Am Surg.* 2013;79:30–4.
13. Dastur JK, Forshaw MJ, Modarai B, Solkar MM, Raymond T, Parker MC. Comparison of short-and long-term outcomes following either insertion of self-expanding metallic stents or urgent surgery in malignant large bowel obstruction. *Tech Coloproctol.* 2008;12:51–5.
14. Smith DC, Sarvananthan S, Martin D, Ramesh A. Safety and efficacy of stenting in large bowel obstruction – a review of clinical practice. *Coloproctology.* 2011;2:WMC001512.
15. Kim JY, Kim SG, Im JP, Kim JS, Jung HC. Comparison of treatment outcomes of endoscopic stenting for colonic and extracolonic malignant obstruction. *Surg Endosc.* 2013;27:272–7.
16. Pommergaard HC, Vilmann P, Jakobsen HL, Achiam MP. A clinical evaluation of endoscopically placed self-expanding metallic stents in patients with acute large bowel obstruction. *Scand J Surg.* 2009;98:143–7.
17. Harris GJC, Senagore AJ, Lavery IC, Church JM, Fazio VW. Factors affecting survival after palliative resection of colorectal carcinoma. *Colorectal Dis.* 2002;4:31–5.

18. Jiménez-Pérez J, Casellas J, García-Cano J, Vandervoort J, García-Escribano OR, Barcenilla J, et al. Colonic stenting as a bridge to surgery in malignant large-bowel obstruction: a report from two large multinational registries. *Am J Gastroenterol*. 2011;106:2174–80.
19. Knight AL, Trompetas V, Saunders MP, Anderson HJ. Does stenting of left-sided colorectal cancer as a “bridge to surgery” adversely affect oncological outcomes? A comparison with non-obstructing elective left-sided colonic resections. *Int J Colorectal Dis*. 2012;27:1509–14.
20. García-Cano J, González-Huix F, Juzgado D, Igea F, Pérez-Miranda M, López-Rosés L, et al. Use of self-expanding metal stents to treat malignant colorectal obstruction in general endoscopic practice. *Gastrointest Endosc*. 2006;64:914–20.
21. Ho KS, Quah HM, Lim JF, Tang CL, Eu KW. Endoscopic stenting and elective surgery versus urgent surgery for left-sided malignant colonic obstruction: a prospective randomized trial. *Int J Colorectal Dis*. 2012;27:355–62.
22. Zhao XD, Cai BB, Cao RS, Shi RH. Palliative treatment for incurable malignant colorectal obstructions: a meta-analysis. *World J Gastroenterol*. 2013;19:5565–74.
23. Small AJ, Coelho-Prabhu N, Baron TH. Endoscopic placement of self-expandable metal stents for malignant colonic obstruction: long-term outcomes and complication factors. *Gastrointest Endosc*. 2010;71:560–72.
24. Williams D, Law R, Pullyblank AM. Colorectal stenting in malignant large bowel obstruction: the learning curve. *Int J Surg Oncol*. 2011;917848.
25. Van Hooft JE, Bemelman WA, Oldenburg B, Marinelli AW, Lutke Holzik MF, Grubben MJ, et al. Colonic stenting versus urgent surgery for acute left-sided malignant colonic obstruction: a multicentre randomised trial. *Lancet Oncol*. 2011;12:344–52.
26. Park S, Cheon JH, Park JJ, Moon CM, Hong SP. Comparison of efficacies between stents for malignant colorectal obstruction: a randomized, prospective study. *Gastrointest Endosc*. 2010;72:304–10.
27. Lee KM, Shin SJ, Hwang JC, Cheong JY, Yoo BM, Lee KJ, et al. Comparison of uncovered stent with covered stent for treatment of malignant colorectal obstruction. *Gastrointest Endosc*. 2007;66:931–6.
28. Kavanagh DO, Nolan B, Judge C, Hyland JM, Mulcahy HE, O’Connell PR, et al. A comparative study of short- and medium-term outcomes comparing emergent surgery and stenting as a bridge to surgery in patients with acute malignant colonic obstruction. *Dis Colon Rectum*. 2013;56:433–40.
29. Chouhan H, Wong CX, Maharaj P, Lawrence MJ, Hunter A, Moore JW. Colorectal stenting for malignant obstruction: an 8-year clinical experience. *ANZ J Surg*. 2012;82:408–11.
30. Watt AM, Faragher IG, Griffin TT. Self-expanding metallic stents for relieving malignant colorectal obstruction: a systematic review. *Ann Surg*. 2007;246:24–30.
31. Dabirian A, Yaghmaei F, Rassouli M, Tafreshi MZ. Quality of life in ostomy patients: a qualitative study. *Patient Prefer Adherence*. 2010;5:1–5.
32. Nagula S, Ishill N, Nash C, Markowitz AJ, Schattner MA, Temple L, et al. Quality of life and symptom control after stent placement or surgical palliation of malignant colorectal obstruction. *J Am Coll Surg*. 2010;210:45–53.
34. Martínez-Santos C, Lobato RF, Fradejas JM, Pinto I, Ortega-Deballón P, Moreno-Azcoita M. Self-expandable stent before elective surgery vs. urgent surgery for the treatment of malignant colorectal obstructions: comparison of primary anastomosis and morbidity rates. *Dis Colon Rectum*. 2002;45:401–6.
35. Zhang Y, Shi J, Shi B, Song CY, Xie WF, Chen YX. Self-expanding metallic stent as a bridge to surgery versus urgent surgery for obstructive colorectal cancer: a meta-analysis. *Surg Endosc*. 2012;26:110–9.
36. Binkert CA, Ledermann H, Jost R, Saurenmann P, Decurtins M, Zollikofer CL. Acute colonic obstruction: clinical aspects and cost-effectiveness of preoperative and palliative treatment with self-expanding metallic stents – a preliminary report. *Radiology*. 1998;206:199–204.
37. Rashid O, Parker S. The cost effectiveness of self-expanding metal stents in the management of malignant left-sided large bowel obstruction. *Colorectal Dis*. 2000;2:233–7.
38. Targownik LE, Spiegel BM, Sack J, Hines OJ, Dulai GS, Gralnek IM, et al. Colonic stent vs. urgent surgery for management of acute left-sided malignant colonic obstruction: a decision analysis. *Gastrointest Endosc*. 2004;60:865–74.
39. Siddiqui A, Khandelwal N, Anthony T, Huerta S. Colonic stent versus surgery for the management of acute malignant colonic obstruction: a decision analysis. *Aliment Pharmacol Ther*. 2007;26:1379–86.
40. Liang TW, Sun Y, Wei YC, Yang DX. Palliative treatment of malignant colorectal obstruction caused by advanced malignancy: a self-expanding metallic stent or surgery? A system review and meta-analysis. *Surg Today*. 2014;44:22–33.