

Corrosion Inhibition of Mild Steel by Using Cetyl Pyridinium Bromide (CPB)

A.K. Dubey^{a,*} and G. Singh^b

^a Polymer and Soft Material Section (PSMS), National Physical Laboratory (NPL),
Dr. K.S. Krishnan Marg, New Delhi-110012, India

^b Corrosion Research Laboratory, Department of Chemistry, University of Delhi-110007, India

Received 12 January 2006; accepted 29 September 2006

Abstract

The corrosion inhibition of mild steel in one normal sulphuric acid solution by CPB has been studied in relation to the concentration of the inhibitor as well as the temperature using electrochemical polarization (galvanostatic and potentiostatic) techniques. The results were supplemented with scanning electron microscopy and infra-red spectroscopy. All the methods employed are in reasonable agreement. There is no particular relationship of inhibition with concentration and temperatures. The thermodynamic functions of dissolution and adsorption processes were calculated from experimental polarization data and the interpretation of the results are given. Adsorption of CPB was found to follow the Langmuir's adsorption isotherm. Brij-30 is a mixed type of inhibitor.

Keywords: cetyl pyridinium bromide (CPB), corrosion inhibitors, mild steel, H₂SO₄, adsorption process, SEM, infra-red spectroscopy.

Introduction

Acid solutions are generally used for the removal of rust and scale in several industrial processes. Inhibitors are generally used in these processes to control the metal dissolution. H₂SO₄ is widely used in the pickling of steel and ferrous alloys [1]. To make secure from attack of acid, inhibitors are frequently used. Organic nitrogen compounds on the corrosion behaviour of iron and steel in acidic solutions are usually employed for their rapid action [2]. If we can prove that adsorption of certain atoms retards corrosion, this might be the easiest and cleanest, and probably the most economic, approach to corrosion inhibition [3].

* Corresponding author. E-mail address: dubey_delhi@rediffmail.com

The use of inhibitors takes more and more attention until now. While there are differences among the theories developed to explain effects of some inhibitors, there is a common consensus about the manner in which the various kinds of inhibitors work [4].

A study of the mechanism of the action of corrosion inhibitors has relevance both from the point of view of the search for new inhibitors and also for their effective use. Acid solutions are generally used for the removal of undesirable scale and rust in several industrial processes. Generally, the use of organic inhibitors to control the metal dissolution is one of the common techniques, and during the past decade many inhibitors have been studied in different media [5].

The aim of this work is to study the inhibiting effect of cetyl pyridinium bromide (CPB) on mild steel in one normal sulphuric acid solution. Galvanostatic and potentiostatic polarizations were done. The effects of inhibitor concentration at different temperatures were studied. The results were supplemented by SEM and IR studies.

Experimental

Inhibitor structure of compound

The organic additive cetyl pyridinium bromide used as the inhibitor has the molecular formula $\text{CH}_3(\text{CH}_2)_{15}\text{N}.\text{Br}$. Cetyl pyridinium bromide (CPB) was produced from Central Drug House (CDH) and was used without further purification.

Chemical composition of mild steel

Materials

Mild steel refers to low carbon steel which is usually used for structural applications. With too little carbon content to through harden, it is weldable, which expands the possible applications. The experiments were performed with cold rolled mild steel specimen. Mild steel coupons of chemical composition (C=0.20%, Mn=1.00%, Si=0.05%, S=0.025%, P=0.25% and Fe=98%) have been used.

Solutions

The aggressive solutions were made of AR grade H_2SO_4 . One normal concentration of acid was prepared using doubled distilled water. The concentrations of inhibitor employed were 10^{-7}M , 10^{-5}M and 10^{-3}M .

Electrodes

Working electrode

Design of working electrodes (WE) is diverse. Most commons in experiments are to study mechanism and kinetics in the laboratory. An essential feature is that the electrode should not react chemically with the solvent or solution components. It is desirable to have an even current and potential distribution and hence fro cell to be designed, so that all points on working electrode surface are geometrically equivalent with respect to the secondary electrode.

Reference electrode

The role of the reference electrode (RE) is to provide a fixed potential which does not vary during the experiments. The RE serves dual purposes of providing a thermodynamic reference and also isolating WE from the system.

Luggin capillary

The luggin capillary in a laboratory cell is made from glass. It is generally filled with the test solution. The luggin holds the reference electrode. The tip of the luggin capillary near the working electrode is open to the test solution. The reference electrode senses the solution potential at this open tip. Note that the luggin tip is significantly smaller than the reference electrode itself. The luggin capillary allows sensing the solution potential close to the working electrode without the adverse effects that occur when the large reference electrode is placed near the working electrode. A luggin capillary can be used to bring the potential measuring point in close proximity to the working electrode under investigation. Such a device can be made of any material provided it is inert to the electrolytic environment. It basically consists of a bent tube with a large enough opening to accommodate a reference electrode and a usually much smaller opening only large enough to insure diffusion movement of the electrolyte. The device minimizes any iR drop in the electrolyte associated with the passage of current in an electrochemical cell.

Auxiliary electrode (counter electrode)

The purpose of the counter electrode (CE) is to supply the current required by the working electrode without limiting the measured response of the cell. It is essential that the electrode process is decomposition of the electrolyte, so that the current flows readily without the need for a large over potential.

Surface treatments of the working electrode

The surfaces of carbon steel specimens were abraded successively by different grade of metallographic emery papers until the surfaces appear free from scratches and other apparent defects, then degreased in hot acetone, washed with bi-distilled water and finally dried. The surface treatment was carried out immediately before each experiment of corrosion tests [7].

Corrosion measurements

Open circuit potential measurements

The potential of mild steel electrodes in produced 1 N H_2SO_4 was measured against saturated calomel electrode in the absence and presence of various concentrations of the inhibitor at the temperatures 298 K, 308 K, 318 K and 328 K. All measurements were carried out using the type (DM 301 Multi-tester) until the steady state potentials are established. The steady state represents an equilibrium state at which I_{ox} is equal to I_{red} .

Galvanostatic polarization measurements

Galvanostat is the simplest way to obtain a constant current in order to apply a voltage from low output impedance voltage sources across a larger resistor in series with the cell. The electrochemical studies were performed in a three electrodes Pyrex glass vessel converter with platinum electrode as counter electrode, saturated calomel electrode (SCE) as reference electrode, and the mild steel coupon as working electrode. The reference electrode coupled to a luggin capillary whose tip was located between the working electrode and the auxiliary electrode (counter electrode). The three necked glass vessel, containing 150 mL of the electrolyte with and without different concentrated solutions of inhibitor in 1 N H₂SO₄. The polarization studies were carried out in unstirred solutions, using the galvanostat. In the galvanostatic polarization studies we did cathodic and anodic polarization with and without different concentrations of inhibitor at different temperatures. The corrosion inhibition efficiency was calculated using the equation:

$$\text{inhibition efficiency (I \%)} = i_0 - i / i_0 \times 100$$

where i_0 is the current density in the absence of additive in solution and i is the current density in the presence of the additive in the solution.

Potentiostatic polarization measurements

Potentiostat is a device for controlling the potential between RE and WE at a fixed and selected potential. The device is simply a voltage follower maintaining the output voltage between reference electrode (RE) and working electrode (WE) at the programming potential. WE have a potential relative to RE, so that the input voltage is inverted in the cell. The polarization studies were carried out in unstirred solutions, using the potentiostat. The steady state polarization was done by potentiostat by applying 20 mV increment after every minute and corresponding current values were recorded one minute after the potential was applied. The anodic polarization experiments were repeated for a number of times for each set and the reproducible data have been recorded.

Scanning electron microscopy

Polished mild steel specimens were tested in minimum and maximum inhibitor solutions in one normal sulphuric acid at room temperature for 24 hours. Then they were washed with distilled water, dried in dessicator and therefore subjected to scanning electron microscopic examination. An electron scanning microscope, JEOL 840 SEM was used.

Infra-red spectroscopy

The saturated solution of inhibitor was prepared in chloroform. In this solution we added a small quantity of silica gel. A small quantity of the dry solid obtained was as such subjected to FTIR analysis. Spectrum was recorded by using Elmer infra-red spectroscope, IT 137.

Results and discussion

Open circuit potential measurements

The electrochemical behaviour of mild steel in 1 N H₂SO₄ was studied on the basis of the change in corrosion potentials (E_{corr}) with time. It is seen that in absence of the inhibitor molecules, the open circuit potential tends from the moment of immersion towards more negative value. This behaviour represents the break down of the pre-immersion air formed oxide film on the mild steel surface. In the presence of different concentrations of the inhibitor the steady state potentials of the working electrodes were shifted towards more positive values, denoting passivation of the mild steel [8].

Galvanostatic polarization measurements

The cathodic and anodic polarization curves for these solutions with and without any inhibitor concentrations at 298 K, 308 K, 318 K and at 328 K are plotted. Logarithms of current densities have been plotted against the corresponding potentials.

From these graphs we obtained the values of corrosion potential (E_{corr}), corrosion current ($\log i_{\text{corr}}$), anodic Tafel region (b_a), cathodic Tafel region (b_c), corrosion inhibition efficiency (I %) and surface coverage (θ). These values are mentioned in table 1. The graph obtained at 298 K is given in Fig. 1.

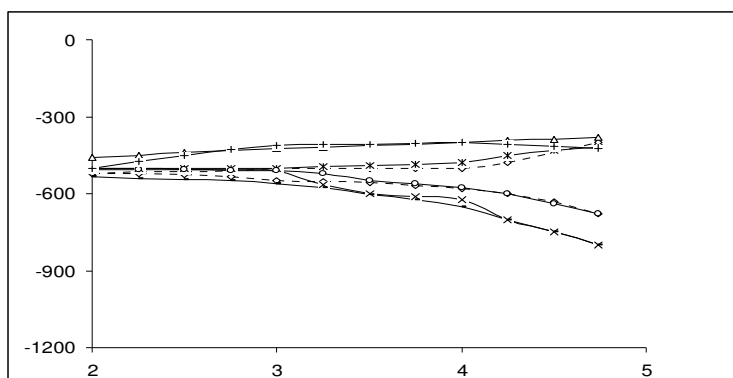


Figure 1. Galvanostatic polarization curves of mild steel in one normal solution containing different concentrations of cetyl pyridinium bromide (CPB), where Δ denotes is for 1 N H₂SO₄, \square denotes for 10⁻⁷ M CPB solution, $+$ denotes for 10⁻⁵ M CPB solution, \times denotes for 10⁻³ M CPB solution.

At lower temperature the decrease in corrosion current with increase in CPB concentrations is much more pronounced than that at higher temperatures. At a particular CPB concentration, the corrosion current is higher at higher temperature and this is observed at all concentrations. In the corrosion process the little change in the corrosion potentials suggest that CPB controls both the cathodic hydrogen evolution as well as iron dissolution reactions. The inhibitor at

higher temperature exerts a greater influence on the cathodic process than on that of the anodic process. During the metal dissolution, metal oxide reaction and metal hydroxide reaction start the chemical association of CPB molecules, with the metal surface through the oxygen lone pair of electron interaction turning to chemical reaction and probably, forming intermediate species $(M-In)_{ads}$ or $(M-In-OH)_{ads}$ or $(M-H-In)_{ads}$ and thereby resulting in irregular slopes. Corrosion current density decreases with concentration and its inhibition efficiency decreases with the rise of temperature.

Table 1. Corrosion electrochemical parameters for mild steel grade IS-226 in 1 N H_2SO_4 in the absence and in the presence of CPB as additive.

T (K)	Conc.(M)	E_{corr} (mV)	$\text{Log } i_{corr}$ ($\mu A/cm^2$)	b_c (mV/dec)	b_a (mV/dec)	I%	θ	1/1- θ
298	0	490	3.00	80	35	0	0	0
	10^{-7}	465	2.50	40	60	49.8	0.684	2.16
	10^{-5}	544	1.78	110	80	90.0	0.94	15.60
	10^{-3}	482	1.66	245	80	92.7	0.955	20.3
308	0	557	2.90	115	85	0	0	0
	10^{-7}	463	2.50	82	63	68.4	0.684	2.16
	10^{-5}	550	1.80	8.8	49	92.9	0.944	14.87
	10^{-3}	400	1.75	80	61	92.9	0.944	16.8
318	0	520	3.12	125	72	0	0	0
	10^{-7}	490	2.55	64	79	73.0	0.730	2.10
	10^{-5}	555	2.25	100	65	86.0	0.865	6.41
	10^{-3}	530	1.52	291	86	97.5	0.974	87.46
328	0	550	3.00	165	76	0	0	0
	10^{-7}	475	3.34	113	112	78.1	0.781	8.56
	10^{-5}	490	2.22	119	129	83.5	0.835	5.06
	10^{-3}	475	1.50	164	72	96.9	0.969	31.25

The peculiar behaviour of CPB at higher temperatures may be due to the joint effects of

- reaction of the inhibitor with electrode surface,
- decomposition of the inhibitor into some other compound in the acid solutions and thereby changing the kinetics of cathodic and anodic reactions in a different manner.

The graph between corrosion current and concentration is plotted in Fig. 1 and the graph between inhibition efficiency with concentration is plotted in the Fig. 2. It shows that there is no regular order of inhibition efficiency with concentration.

CPB affects the corrosion of mild steel in acid medium in the form of protonated organic molecule and the prevailing inhibitor effect is anodic rather than cathodic at ordinary temperature (298 K) and at lower concentrations. At higher temperatures the inhibitor acts both in cathodic as well as in the anodic region. At all temperatures it is seen that inhibition effect is bigger at higher concentrations

than at lower concentrations. At all concentrations of CPB, the change in corrosion potentials from that in uninhibited solution is lower, except at higher temperatures where it remains unchanged. This indicates that it is a mixed type of inhibitor with a slight predominance of anodic, except at 328 K.

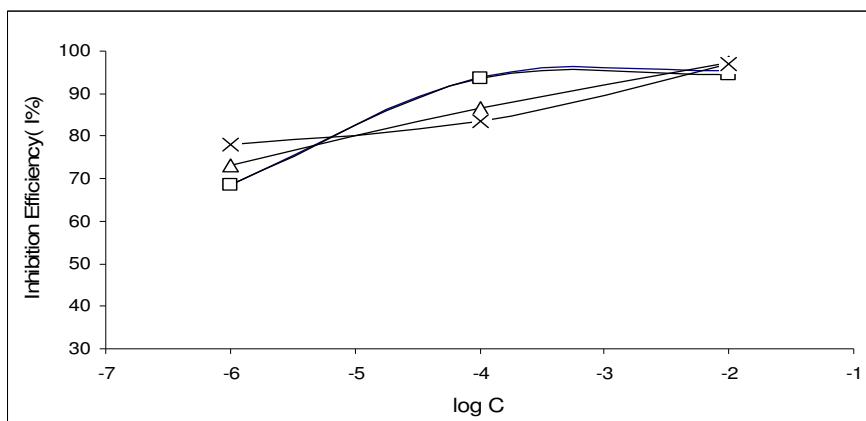


Figure 2. Variation of percentage of the corrosion inhibition efficiency (I%) with inhibitor concentration for mild steel coupon in 1 N H₂SO₄ containing various inhibitors at 298 K, 308 K, 318 K and 328 K; where ◇ denotes for 298 K, □ denotes for 308 K, △ denotes for 318 K, × denotes for 328 K.

Effect of temperature and adsorption isotherm

In order to study the effect of temperature on corrosion inhibition of mild steel in the acid reaction and to determine the activation energy of the corrosion process, galvanostatic polarization studies were done at various temperatures (298 K-328 K) in the absence and in the presence of CPB at different concentrations. The corresponding results are given in table 1. The change of corrosion current with temperature is plotted in the Fig. 3. We note that the corrosion rate increases with rise of temperature both in inhibited and uninhibited acid solutions.

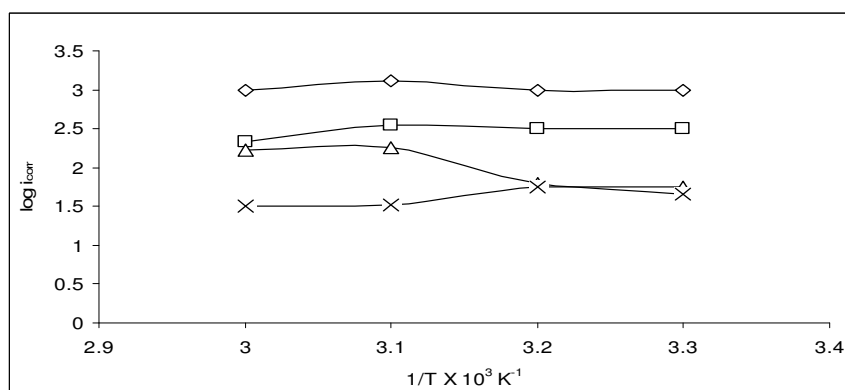


Figure 3. Variation of corrosion current density with temperature (298 K, 308 K, 318 K and 328 K) at different inhibitor concentration for mild steel coupon in 1 N H₂SO₄; where △ denotes is for 1N H₂SO₄, □ denotes for 10⁻⁷ M CPB solution, denotes + for 10⁻⁵ M CPB solution, × denotes for 10⁻³ M CPB solution.

Fig. 4 shows the change of surface coverage with temperature whereas Fig. 5 shows a plot of $\log (\theta/1-\theta)$ versus $\log C$, where θ is the surface covered by inhibitor molecules and C is the inhibitor concentration in mol^{-1} . The Gibbs energy of adsorption (ΔG_{ads}) was calculated from the following equation:

$$\theta / 1 - \theta = 1/55.55 E \exp (-\Delta G_{\text{ads}}/RT)$$

The surface coverage value θ was evaluated using values of inhibition efficiency. The inhibition behaviour of TMAB at different concentrations and different temperatures, assuming change in the mechanism of both the hydrogen evolution reaction and iron dissolution and the degree of coverage θ , can be obtained using the equation

$$\theta = 1 - (i_{\text{inh}}/i_{\text{uninh}})$$

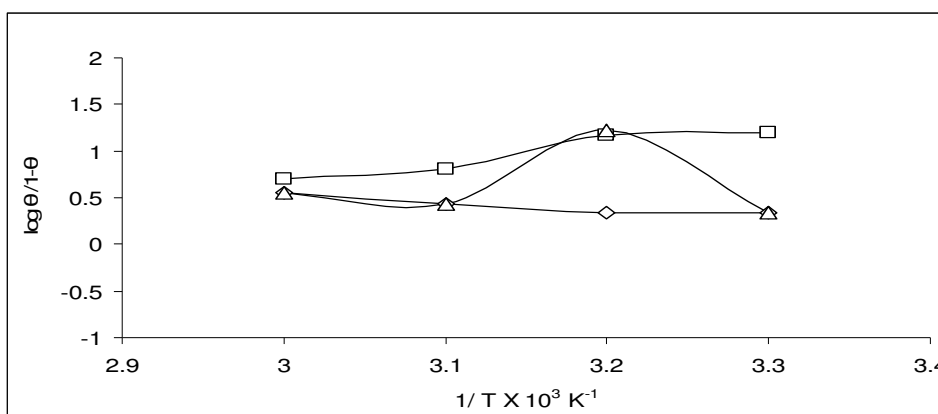


Figure 4. Variation of surface coverage area with temperature (298 K, 308 K, 318 K and 328 K) at different inhibitor concentration for mild steel coupon in 1 N H₂SO₄; where Δ denotes are for 1 N H₂SO₄, \square denotes for 10⁻⁷ M CPB solution, \diamond denotes for 10⁻⁵ M CPB solution.

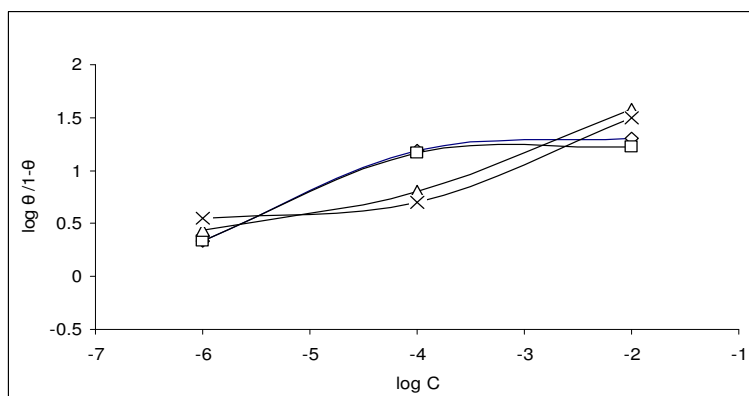


Figure 5. Variation of surface coverage area with inhibitor concentration for mild steel coupon in 1 N H₂SO₄ containing various inhibitors at 298 K, 308 K, 318 K and 328 K; where \diamond denotes for 298 K, \square denotes for 308 K, Δ denotes for 318 K, \times denotes for 328 K.

It is assumed that the inhibitor gives monolayer adsorption coverage at any instant fraction (θ) of the metal surface in a uniform or random manner and that the free fraction (θ) of the metal surface ($1 - \theta$) reacts with and as it does in the absence of the inhibitor. The $(1 - \theta)$ can be assured to be equal to i_c/i_0 and θ can be calculated readily from the results within a certain range of the inhibitor. The surface coverage due to the progress of adsorption and desorption also changes with temperature. It shows that this inhibitor belongs to the second category of Putilova's classification of inhibitors, which is characterized by no effect on the temperature coefficient. This type of inhibitor according to Putilova retards corrosion at ordinary temperature, but the efficiency is not reduced considerably at elevated temperature [9]. The series of isotherm obtained over a range of temperature viz, 298 K, 308 K, 318 K and 328 K yielded reasonable values of heats of adsorption when the function of $\log (\theta / 1 - \theta)$ is plotted against the reciprocals of absolute temperature. Plots of inhibited corrosion rates vs. the reciprocal of temperatures for a series of constant inhibitor concentration show that the net activation energy of corrosion energy of corrosion process shows irregular trend with concentration of CPB in 1 N H₂SO₄ solution. The corrosion behaviour of mild steel surface and the surface coverage show irregular relationship with the inhibitor concentration. The values of activation energy (E_a) were calculated using the Arrhenius equation:

$$E_a = -2.3003 \times R \times d (\log i_c) / d (1/T)$$

where R is the universal gas constant and T is the temperature in Kelvin. The average activation energy of CPB is 54.84 kJmol⁻¹.

The heat of adsorption Q at different temperatures is calculated from Langmuir's adsorption isotherm equation

$$\log \theta / 1 - \theta = \log A + \log C - Q/RT$$

The average heat of adsorption for CPB is 20.00 kJmol⁻¹.

From the value of the adsorption it can be assumed that CPB molecules physisorbed over mild steel surface by weak forces. Two processes govern this adsorption at particular temperatures (i) ion pair adsorption between protonated molecules and the negatively charged metal surface and (ii) interaction between the lone pair of electrons on nitrogen atom with the vacant orbital of metal atom. This act of inhibition at elevated temperature is hindered by two processes: (i) time lag between the processes of adsorption or desorption becoming shorter at higher temperatures, and hence the metal is more exposed to acid solution, and (ii) the molecular films start acting as proton carrier and the molecules and the film get deprotonated, and thus it leads to desorption, and therefore this enhanced rate of corrosion results.

From the surface coverage data of the CPB, it is inferred that the adsorption of the CPB on the iron surface inhibits corrosion. Generally, four types of adsorption may take place, involving organic molecules at the metal solution interface [10]:

- (i) the electrolytic attraction between charged molecule and the charged metal;
- (ii) interaction of unshared electron pairs in the molecules with the metal;
- (iii) interaction of p electrons with the metal, and
- (iv) combination of the above points.

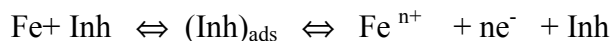
Inhibition efficiency depends on several factors, such as the number of adsorption sites and their charge density, molecular size, heat of hydrogenation, mode of interaction with the metal surface and the formation of metallic complexes [11]. Due to adsorption, inhibitor molecules block the reaction sites and reduce the rate of corrosion reaction [12, 13].

The inhibitor molecules inhibit the corrosion of mild steel by adsorption on the mild steel-solution surface; the adsorption provides the information about the interaction around the adsorbed molecules themselves as well as their interaction with the electrode surface. A correlation between θ and the concentration of the inhibitor in the electrolyte can be represented by the Langmuir's adsorption equation:

$$\theta = \frac{KC}{1 + KC}$$

where K is the constant of adsorption.

According to Bockris and Drazic, the inhibition mechanism could be explained by $\text{Fe}-(\text{Inh})_{\text{ads}}$ reaction intermediated as below [14]:



The adsorbed layer combats the action of sulphuric acid solution and enhances protection of the metal surface [15, 16]. When there is sufficient $\text{Fe}(\text{Inh})_{\text{ads}}$ to cover the metal surface (if the inhibitor concentration is low or the adsorption rate is slow), metal dissolution would take place at sites on the mild steel surface which are free of $\text{Fe}-(\text{Inh})_{\text{ads}}$. With high inhibitor concentration a compact and coherent inhibitor over layer forms on mild steel surface, reducing chemical attack on the metal. The adsorption of an organic molecule on the surface of the mild steel is regarded as a substitution of the adsorption process between the organic compound in the aqueous phase (Org_{aq}) and the water molecules adsorbed on the mild steel surface ($\text{H}_2\text{O}_{\text{ams}}$)



where x is the ratio size, in terms of the number of water molecules replaced by the adsorbate molecules. When the equilibrium of the process described in the above equation is reached, it is possible to obtain different expression of the adsorption isotherm plots.

Potentiostatic polarization measurements

A detailed study of steady state potentiostatic polarization behavior of the anodic dissolution of mild steel in the presence of CPB was made in 1 N H_2SO_4 solution

at room temperature (298 K). The graph between potential and current density is plotted for 1 N H₂SO₄, 10⁻⁷M, 10⁻⁵M and 10⁻³M solution of CPB plotted in Fig. 6 and the values of the critical current density (i_c), passive current (i_p) and passivation potential (E_{pp}) are mentioned in table 2.

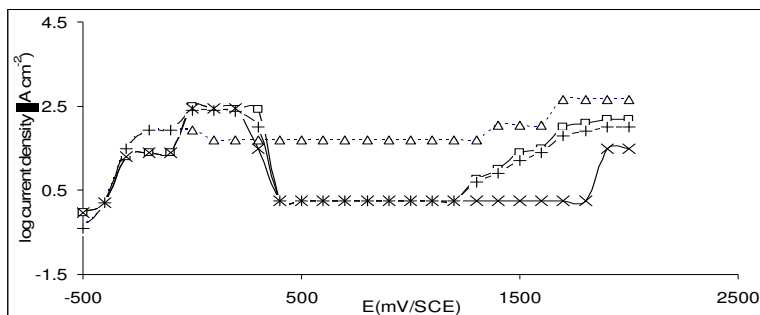
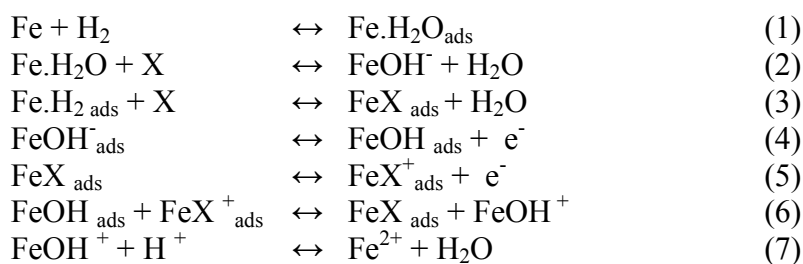


Figure 6. Potentiostatic polarization curves of mild steel in one normal solution containing different concentrations of CPB; where Δ denotes are for 1N H₂SO₄, □ denotes for 10⁻⁷ M CPB solution, denotes + for 10⁻⁵ M CPB solution, × denotes for 10⁻³ M CPB solution.

Table.2. Passivation data for CPB obtained by potentiostatic polarization.

Additive	I _c (Current density) μA/cm ²	I _p (Passive current) μA/cm ²	Ranges of E _{pp} (V)
1 N H ₂ SO ₄	79.4	50.1	110-1340
10 ⁻³ M	316.2	1.99	323-1352
10 ⁻⁵ M	316.2	2.81	365-1380
10 ⁻⁷ M	660.6	3.98	563-1399

It is seen from the table and figure that i_p, E_{pp} become lower and i_c becomes higher on comparison with the dissolution in the absence of the TMAB. Hence it can be concluded that CPB is a good passivator. H₃O, H₂SO₄, SO₄ and OH ions present in the solution interfere with formation of resistance layer because of the adsorption of CPB on the metal surface with the help of already adsorbed anions present in the solution. It is commonly accepted that kinetic of iron anodic oxidation in acid depends on the adsorbed intermediates FeOH_{ads}. An iron anodic oxidation mechanism, which is valid in the presence of the inhibitor, could be similar to that discussed by Mc Cafferty and Hackerman and also by Sternberg and Branzoi [17]



where the species X are the inhibitor molecule, in our case. This mechanism shows that the anodic reaction kinetics is affected by two intermediates: one involving adsorbed hydroxyl (FeOH_{ads}) and the other involving the adsorbed inhibitor molecule (FeX_{ads}). The main effect of the petroleum content on the value of corrosion rate may account for the high effect exerted by the organic inhibitor molecule on the anodic reaction. The rate of anodic dissolution (step 4) depends on the product of step (2), but the two competitive steps (2) and (3) are based on the $\text{Fe.H}_2\text{O}_{\text{ads}}$. Displacements of the adsorbed water molecule by the species X, can affect on the step (4). Every condition, such as molecular shape or localized partial charges or by another view, strict hindrance of X molecule to the metal surface, can variegate the above competition. The influence of two solvents on each inhibitor molecules causes dispersion of the inhibition ability. This dispersion may accelerate from the adsorption of the inhibitor molecule onto the different metal surface sites having different activation energies for chemisorptions (lattice planes, edges, kinks, dislocations, inhomogeneities, etc.). The passive film on mild steel is a hydrated oxide film having a gel like structure and protons present in the passive film are pulled out by the anodic polarizations. As per Pyun hydrogen is ionized to protons in the passive film due to the anodic character of the passive film. As hydrogen is charged into passive film, the average concentration of protons increases the amount of hydrogen containing species such as H_2O and OH^- in the passive films and with the increase of potential beyond passive ranges the passive films braked to give trans-passive region with evolution of oxygen in this range.

It may be noted that CPB forms a passive layer or resistive layer with the help of already adsorbed anions present in the solutions. The cooperative adsorption leads to the formation of the complexes of the types $(\text{M-In-OH})_{\text{ads}}$, $(\text{M-OH-In})_{\text{ads}}$ or $(\text{M-In-A})_{\text{ads}}$, where A is any of the already adsorbed anions on the metal surface which gives large potential regions.

Scanning electron microscopy

In the present work SEM was operated at 10 KV, since the secondary electrons emanate from a depth of about 10 Å or less from the corroded surface. Fig. 7(A) shows the micrographs by SEM of the unexposed surface of the uncorroded surface of mild steel which is found to be absolutely free from any noticeable defect such as cracks and pits.

Polishing scratches are also visible. Fig. 7 (B, C, and D) show micrographs by SEM of mild steel specimens exposed in 1 N H_2SO_4 , 10^{-7}M CPB, 10^{-5}M CPB, and 10^{-3}M CPB solutions at a magnification of 2000. Uniform corrosion was observed.

Flakes showing corrosion products are observed in the micrographs. The electron micrographs reveal that the surface was strongly damaged owing to corrosion in absence of the inhibitor, but in the presence of inhibitor there is a much less damage on the surface. This is attributed to the formation of a good protective film on the carbon steel surface. It is quite apparent from the micrographs the uniform products like metal hydrides, and their oxides are also visible. On

comparison CPB acts as good inhibitor at higher concentrations. The extent of the inhibitor is reduced considerably in the presence of smaller concentrations of CPB.

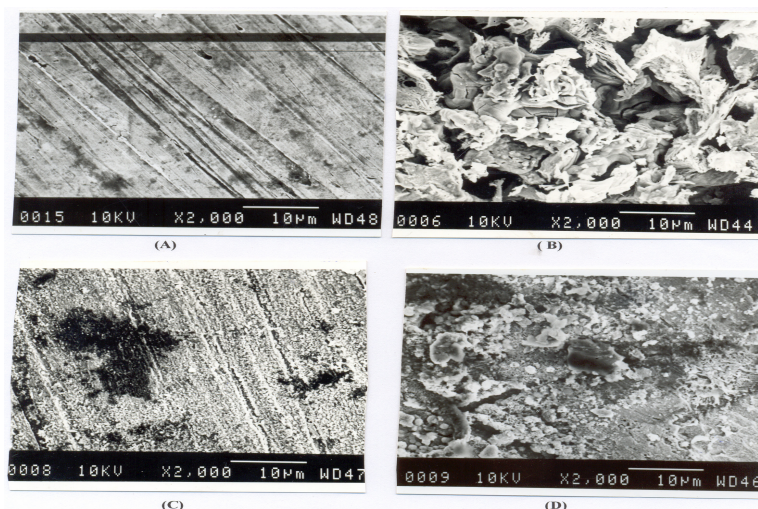


Figure 7. Scanning electron micrographs of mild steel samples (at 2000 magnification); (A) after polishing, (B) after immersion in 1 N H₂SO₄ for 24 hours, (C) after immersion in 10⁻³ M CPB solution for 24 hours, (D) after immersion in 10⁻⁷ M CPB solution for 24 hours.

Infra-red spectroscopy

Silica gel was specially chosen because finely divided silica gel crystals have larger surface area for adsorption of organic molecules. Thus sufficient adsorbed material can be included in the sample to yield a spectrum of moderate intensity. Further with such finely divided materials radiation losses by scattering are not large, especially at frequencies below 3000 cm⁻¹. The various peaks in the spectra of CPB adsorbed over silica gel are given in Fig. 8. The peaks have been tabulated in table 3. On comparing the spectra of pure silica with the spectra of adsorbed CPB molecule over silica, it is observed that certain peaks have been disappeared completely and some have shifted to higher frequency region, proving that some adsorption has been taking place over the solid surface. In the spectra of CPB, the disappearance of C=C, N-H_{str} and N-H_{def} proves the adsorption process.

Conclusions

1. Cetyl pyridinium bromide (CPB) is a very effective corrosion inhibitor of mild steel in acidic medium, particularly at 298 K and at high concentrations.
2. The inhibition efficiency increases with the increase in concentration, whereas its inhibition efficiencies almost remain the same with increasing the temperature.
3. This is a mixed type inhibitor.
4. It mainly acts by blocking the active sites on the cathodic and anodic regions.

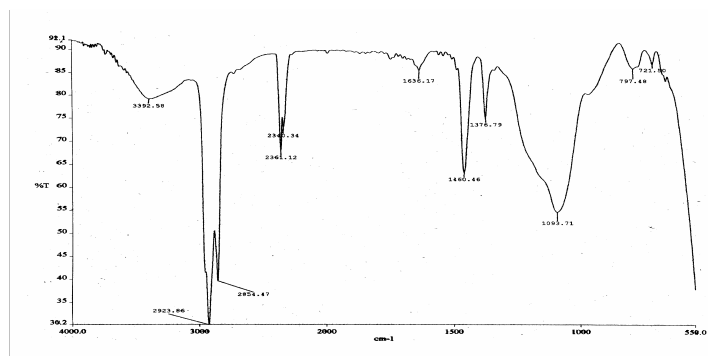


Figure 8. Infra-red spectra (the graph between % transmittance and frequencies) of cetyl pyridinium bromide (CPB) adsorbed on silica gel.

Table 3. Infra-red spectroscopic data of CPB.

Inhibitor	C-H (cm^{-1})	C-C (cm^{-1})	C-O (cm^{-1})	C-OH (cm^{-1})	N-C (cm^{-1})	N-H (cm^{-1})	C=C (cm^{-1})	N-H Deformation (cm^{-1})
CPB	-	1487.26	-	-	-	3399.29	777.82	1637.55
CPB _{ads}	-	460.461	-	-	-	-	-	-

References

1. F. Bentiss, M. Lagrenee, M. Traisnel, J.C. Hornez, *Corrosion Science* 41 (1999) 789.
2. A. Chetouani, B. Hammouti, A. Aouniti, N. Benchat and T. Benhadda, *Progress in Organic Coatings* 45 (2002) 373.
3. M. Hourani and F. Wedian, *Corrosion Science* 42 (2000) 2131.
4. F. Touhami, A. Aouniti, Y. Abed, B. Hammouti, S. Kertit, A. Ramdani and K. Elkacemi, *Corrosion Science* 42 (2000) 929.
5. L. Elkadi, B. Mernari, M. Traisnel, F. Bentiss and M. Lagrenee, *Corrosion Science* 42 (2000) 703.
6. M.A. Migahed, *Prog. In. Org. Coat.* 54 (2005) 92.
7. J.M. Abd El-Kader, A.A. El-Warraky, A.M. Abd El-aziz, *Br. Corros. J.* 33-2 (1998) 139.
8. I.N. Putilova, S.A. Balezin and V.P. Barannik, *Met. Corros. Inhibitors*, Pergamm Press, N.Y. (1960) 31.
9. D. Schweinsberg, G. George, A. Nanayakkara, D. Steiner, *Corros. Sci.* 28 (1988) 55.
10. A. Fouda, M. Moussa, P. Taha and E.L. Neanaa, *Corros. Sci.* 26 (1986) 719.
11. N. Hackerman, E. Snavely Jr. and J.S. Payne, *J. Electrochem. Soc.* 113 (1966) 651.
12. T. Murekewa, N. Hackerman, *Corros. Sci.* 4 (1987) 1051.
13. J.O'M. Bockris and Drazic, *Electrochim. Acta* 7 (1962) 293.
14. G. Moretti, G. Quartarone, A. Tatsan and A. Zingales, *Werkst. Korros.* 45 (1994) 5.
15. M.A. Quraishi, J. Rawat and M. Ajmal, *J. Appl. Electrochem.* 30 (2000) 745.
16. H. Ashassi-Sorkhabi and S.A. Nabavi-Amri, *Acta Chim. Slov.* 47 (2000) 512.